



On the Trail to Health, Heritage, and Happiness

Route 4: "Greeley's Number Three"

<https://goo.gl/maps/PA2E5GQML542>

County, City/Town:	Weld, Greeley
One-way length:	4.2 miles, approximately
Estimated travel time:	Walking time one-way and stopping to answer questions and take pictures = 1 hour, 45 minutes
Suggested Season:	Summer, Fall, Winter
Cell phone coverage:	Available for entire route

Route Recommendations: The route and Points of Interest (POIs) are described travelling from west to east, beginning at the Poudre Learning Center at 83rd Ave and F Street in Greeley and ending at Rover Run Dog Park on F Street in Greeley. Easily complete a 8.4 mile round-trip by bike, walk approximately 2 miles to the halfway point and then turn back to complete 4 miles, or walk the entire 4.2 mile route by bringing a friend and two cars — park one at the Poudre Learning Center trailhead and the other at the trailhead at Rover Run Dog Park.

Getting there:

- **Trailhead at Poudre Learning Center (PLC) (recommended starting point):** **The trailhead is located at 8313 W. F Street in Greeley, CO.** From NCRH, head east on Hwy 34 and take the exit toward 10th St/Greeley/Business Route. Proceed on 10th St/Business 34 for 2.9 miles and then turn left (north) onto 83rd Avenue. Proceed north on 83rd Ave for 1.3 miles before turning left (west) onto F Street. The Poudre Learning Center will be on your right. Park in the trailhead parking lot.
- **Trailhead at Rover Run Dog Park:** **The trailhead is located at approximately 5207 F Street in Greeley, CO.** From NCRH, head east on Hwy 34 and take the exit toward 10th St/Greeley/Business Route. Proceed on 10th St/Business 34 for 4.9 miles and then turn left (north) onto 59th Avenue. Proceed north on 59th Ave for 1.1 miles before turning right (east) onto F Street. Proceed .9 miles (approximately) and the entrance to Rover Run Dog Park will be on your left. Park in the trailhead parking lot.
- **Rover Run Dog Park trailhead to the Poudre Learning Center trailhead:** If you decide to bring two cars and leave one at each end of the route, we recommend leaving a car first at the trailhead at Rover Run Dog Park and then driving to the Poudre Learning Center to start the route. From the parking lot at Rover Run Dog Park, head west on F Street for .9 miles before turning right (north) onto 59th Avenue. Head north on 59th Ave for 1 mile and then turn left (west) onto O Street. Head west on O Street for 2 miles and then turn left (south) onto 83rd Avenue. Head south on 83rd Ave for .8 miles before turning right (west) onto F Street and turning into the Poudre Learning Center trailhead parking lot.

Make a day of it—Fun for the whole family! Looking for a fun excursion for your family? There are a couple of nearby attractions that share information about the natural resources and history of the area that you won't want to miss.

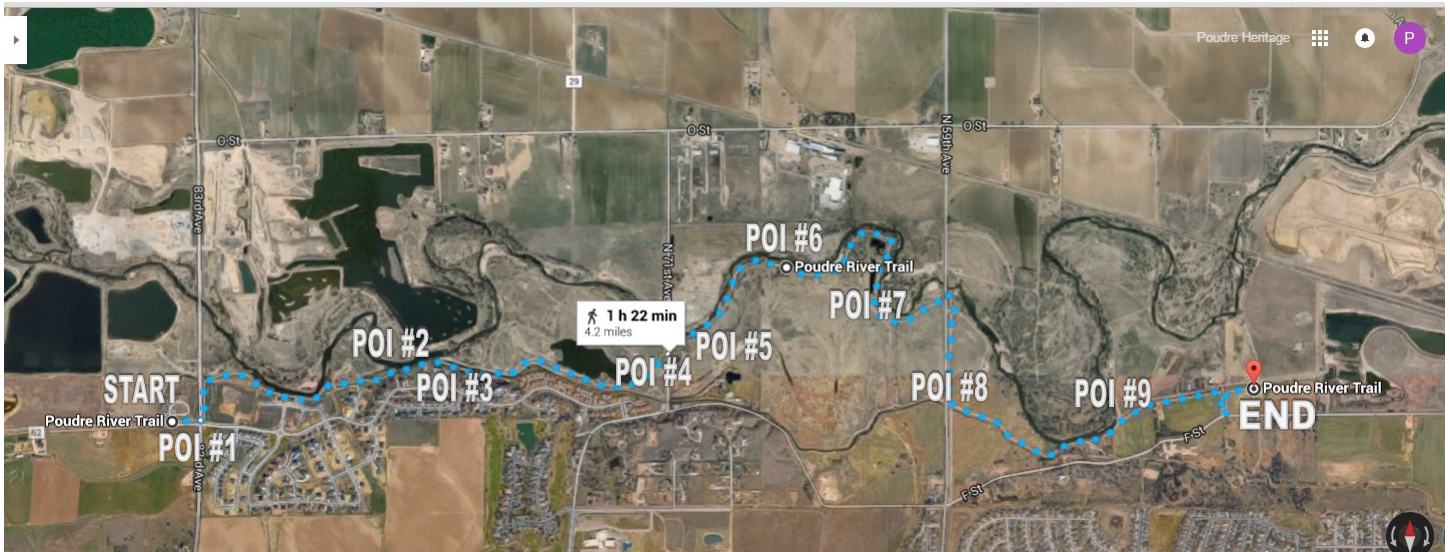
- **The Poudre Learning Center** is a premier facility that develops and offers interdisciplinary education programs aimed at reinforcing concepts presented in local school curriculums and is a focal point for the study of the Poudre River environments through the use of labs, activities, and trips. Check out their calendar before you go to see a schedule of public programs and events!
- **Centennial Village Museum** is an 8-acre living history experience featuring over 35 architecturally unique structures, costumed interpreters, heritage farm animals, beautifully landscaped grounds and interactive experiences. Step back in time and learn about the early pioneer settling of the western high plains, a time when grand houses, growing businesses, extensive prairies and agriculture were all a part of daily life.

Poudre Learning Center: 8313 W. F Street in Greeley. (970) 352-1267. www.poudrelearningcenter.org

- **Tickets:** FREE, donations appreciated
- **Hours:** Monday - Friday, 7:30am to 4:30pm. Evening and weekend programs as scheduled.

Centennial Village Museum: 1475 A St. in Greeley. (970) 350-9220. <http://greeleymuseums.com/locations/centennial-village/>

- **Admission:** \$8 Adults, \$6 Seniors (60+), \$5 Children (3 to 17), \$18 Family Rate (max. 5 people)
- **Hours:** Open May through September, Fridays & Saturdays, 10am - 5pm, Sundays, 12pm - 5pm. Closed major holidays.



Route 1: “Greeley’s Number Three” <https://goo.gl/maps/PA2E5GQML542>

START: Poudre Learning Center trailhead is located at 8313 W. F Street in Greeley. From the parking lot, head east toward the Eagle Tower. On your way, check out the first of three “story posts” that you will see on this route. Each of the 13 sections of the eastern Larimer/western Weld Poudre River Trail is named with a historical or geological reference and is marked with a Story Post that features the names of the two adjoining trail sections along with decorative engravings that illustrate the significance of that section. These posts received a first place award in the 2010 AICA Design Contest in the category for Public/Civic Monuments.



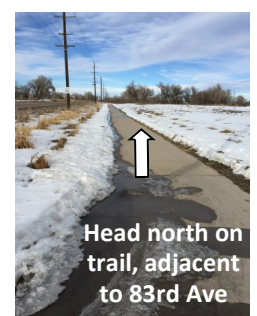
POI #1: PLC Eagle Tower—Lions Open Space Bridge – 282 feet. Check out the Eagle Tower with its layers of rock that represent the surrounding geology. Locate the blue-bordered Cache la Poudre River National Heritage Area (CALA) sign that surrounds the base. You are viewing one of four CALA signs.

- **Heritage Hunt Question:** Share a date/time frame and one piece of information from the “Timeline” section on the right side of the sign:



POI #1: PLC Eagle Tower with CALA interpretive sign pictured to its left.

Continue east and cross 83rd Avenue: Once you have crossed 83rd Avenue, you will turn directly north and continue on the Poudre River Trail to the next POI.



POI #2: The Narrows / Signature Bluffs — .7 miles. This is a beautiful (and narrow) section of the trail that runs next to the river and a great place to view wildlife. Use caution and watch out for cyclists and poison ivy! Please practice Leave No Trace and do not make your mark on the fragile Signature Bluffs.



POI #3: Greeley #3 Ditch—Head gate, wayside interpretive sign, and Parshall Flume / chart house — .9 miles. Check out the 2009 head gate structure and then learn more about the historic Greeley #3 Ditch, built in 1870.

- **Heritage Hunt Question:** How did the Union Colony pay for the building of the Number 3 Ditch?
- **Heritage Hunt Question:** Scan the QR code on the interpretive sign (or visit the website listed by the QR code: www.poudrerivertour.com/3ditch), watch the *Irrigation, Ditches, and Canals* video and answer the following question:
For what purpose were the Greeley #2 and Greeley #3 canals built?



POI #3: Number 3 Ditch sign and modern head gate in background.

Proceed a little farther east along the trail and you will see a chart house and Parshall Flume, used for measuring surface waters and irrigation flow. Continue on until you reach a bridge that crosses the Greeley #3 Ditch—1.0 miles.

- **Seasonal Selfie:** Standing on the bridge, take a selfie with the Greeley #3 charthouse in the background.



Greeley #3 Ditch—looking upstream towards charthouse and head gate.

POI #4: 71st Avenue Trailhead — 1.5 miles. Once you see the big red barn, you'll know you're almost there. Check out the story post for the Signature Bluffs / Sheep Draw Junction and learn more about the Poudre River Trail as well as the multitude of wildlife that exists along the river. Continue to follow the trail and cross over 71st Avenue to continue on the route to the next POI.



POI #5: Old farm equipment — 1.7 miles. Just after you cross 71st Ave, you'll see a sign letting you know about the Duran Family who provided their farmlands to the Poudre River Trail. Just past the sign you'll see a variety of old farm equipment on the south side of the trail.

- **Seasonal Selfie:** Take a selfie with some old farm equipment in the background.



POI #5: Old farm equipment



POI #6: HALFWAY POINT at chain link fence

POI #6: Chain link fence — 2.0 miles **HALFWAY POINT**

POI #7: Interpretive Sign about area birds — 2.5 miles. This is a great place to view birds. Take a moment at this sign and learn more!

- **Heritage Hunt Question:** Which type of bird builds a nest with a “back door?”



POI #7: Bird interpretive sign

POI #8: Intersection of the Poudre River Trail and the Sheep Draw Trail — 3.1 miles. At this trail intersection, turn left (east) to stay on the Poudre River Trail.



You will now be walking along the Greeley #3 Ditch once more!

Enjoy the “Poudre prairie dogs” who will likely herald your approach.



POI #9: Boyd and Freeman Ditch head gate — 3.7 miles. At this point the trail continues east, while the river meanders north before turning east again.

- **Seasonal Selfie:** **Heritage Hunt Question:** From the trail, take a selfie with the Boyd-Freeman head gate in the background.



POI #9: Boyd and Freeman head gate

Continue to follow the trail around a driveway until you reach Rover Run Dog Park.



END: Rover Run Dog Park - 4.2 miles.

The parking lot is located at approximately 5207 F Street in Greeley, CO .

Check out the third story post on this route (Cottonwood Bend / Sandpiper Ponds). If you continue on the Poudre River Trail between two chain link fences, you will cross over the Boyd and Freeman Ditch.



END: Story Post and trail over the Boyd and Freeman Ditch,
near Rover Run Dog Park