



8 T H A N N U A L

POUDRE RIVER FORUM

*Presented by the Poudre Runs
Through It & The Cache la
Poudre River National
Heritage Area.*

Cache la Poudre River
National Heritage Area



SCHEDULE OF EVENTS

8am.....Registration Opens

9am.....Welcome & Overview

Keynote Address

Becky Mitchell, Director CWCB

Poudre Runs Through It Video

Water & Affordable Housing

11:30am.....Lunch

Poudre Pioneer Award Presentation

Water & Agriculture

Watershed & River Recovery Update

3pm.....Closing Reception with Beer & Live Music



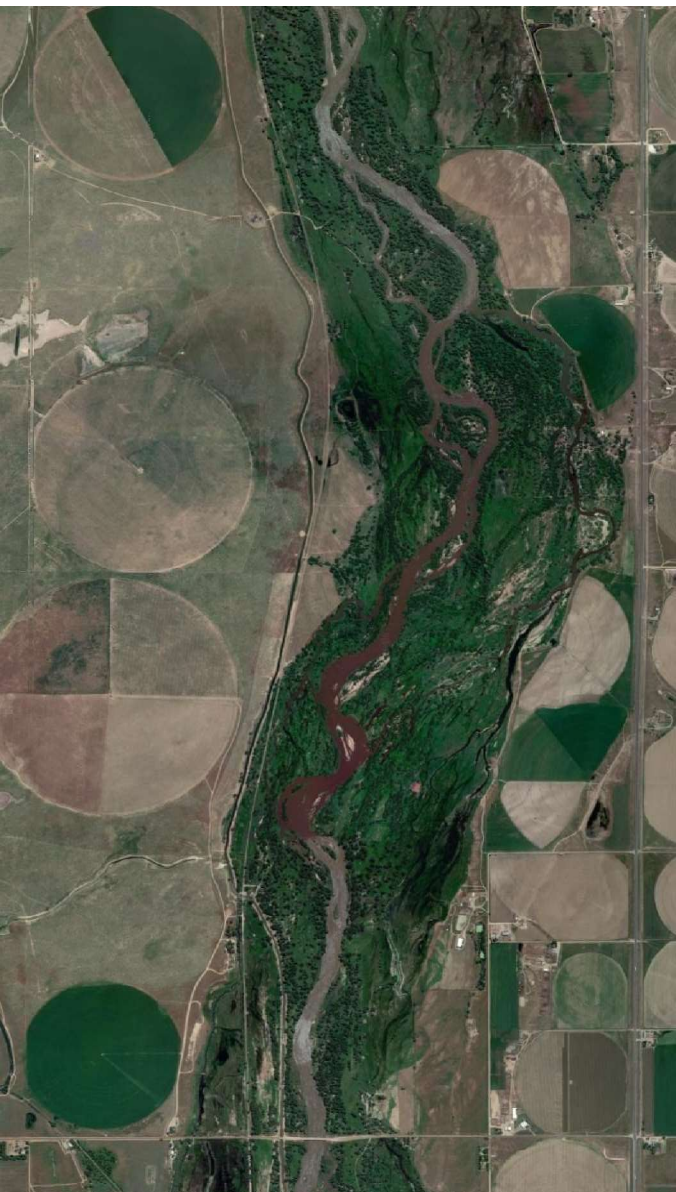
QUESTIONS AND ANSWERS

Participating is Easy.

Go to: **ahaslides.com/PRF** to join

or, **scan the QR code on your table.**





Keynote Address

BECKY MITCHELL



DIRECTOR OF THE COLORADO WATER
CONSERVATION BOARD (CWCB)

COLORADO COMMISSIONER TO THE
UPPER COLORADO RIVER COMMISSION



COLORADO

**Colorado Water
Conservation Board**

Department of Natural Resources

Rebecca Mitchell,
Director, Colorado Water Conservation Board
Colorado River Commissioner
Rebecca.Mitchell@state.co.us

Who We Are

Mission:

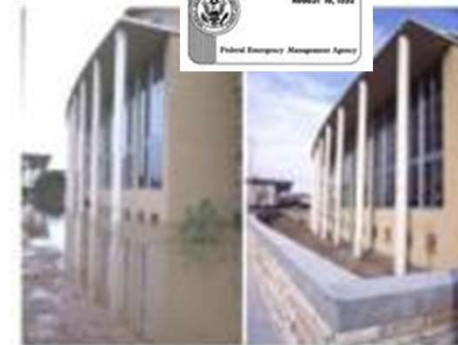
To Conserve, Develop, Protect and Manage Colorado's Water for Present and Future Generations.

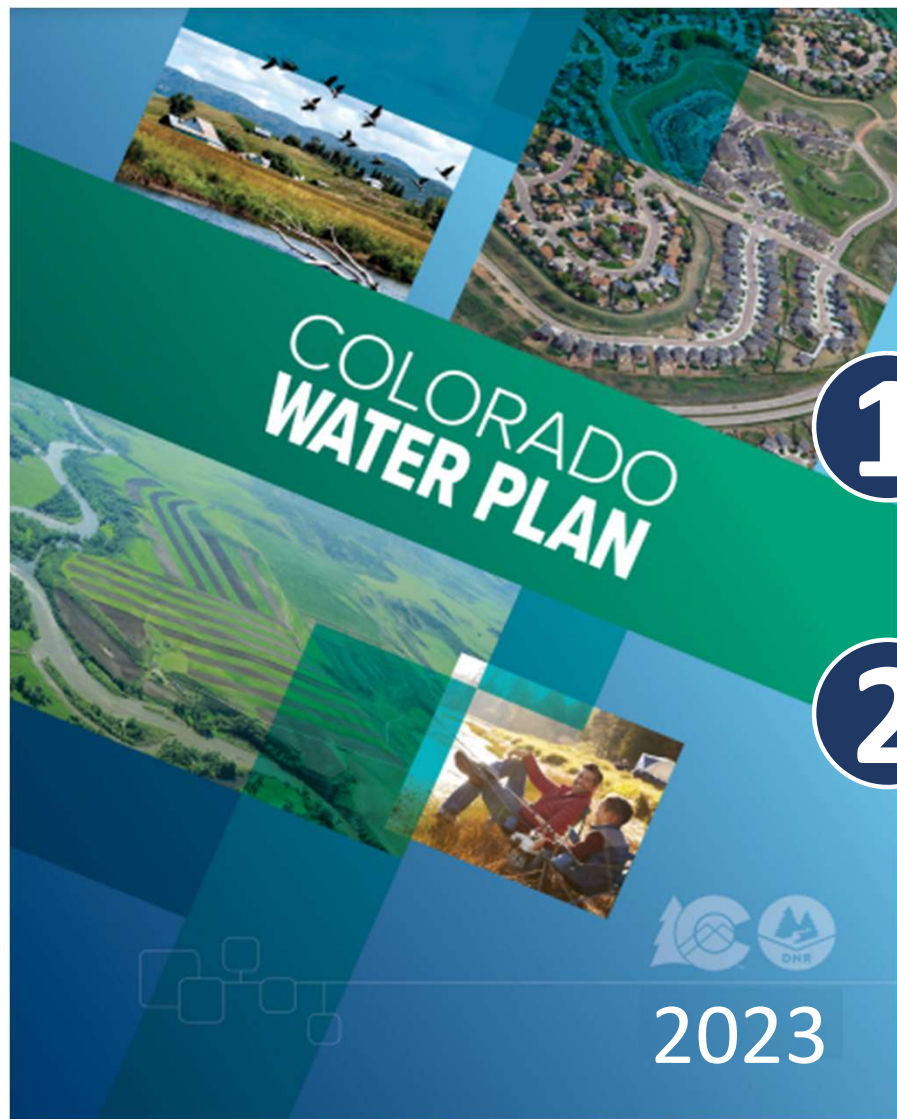
- Board of Directors representing each Basin
- Staff of nearly 60

What We Do

Operations / Programs:

- Water Project Loan Program
- Water Conservation and Drought Planning
- Interstate Compact Protection
- Stream and Lake Protection
- Watershed & Flood Protection
- Decision Support Systems
- Water Supply Planning





What is the Water Plan?

1

AN OPPORTUNITY TO PARTNER

- Sets the stage for collaboration and mitigating risk
- Shines a light on critical state water issues

2

A STRATEGY FOR CWCB

- A CWCB planning document
- Highlights agency opportunities for leadership

The 2023 Colorado Water Plan

INTEGRATED AREAS CATALYZE ACTION



VIBRANT COMMUNITIES
municipalities, utilities, industry, cities, towns, and
small urban and rural communities



THRIVING WATERSHEDS
environment and recreation, river health,
watershed health, forest health, aquatic species



ROBUST AGRICULTURE
established cash crop farms, local food, orchards,
ranching, Acequias, ditch companies



RESILIENT PLANNING
climate adaptation, climate extremes, equity,
inclusivity, supportive government, education

The 2023 Colorado Water Plan

50 PARTNER
ACTIONS
WHAT YOU CAN DO

50 AGENCY
ACTIONS
HOW CWCB & OTHER AGENCIES SUPPORT



CONSERVATION
& LAND USE



WATERSHED HEALTH
& RECREATION



WATER STORAGE
& SUPPLY



AGRICULTURE



ENGAGEMENT
& INNOVATION

Colorado River Updates



COLORADO
Colorado Water
Conservation Board
Department of Natural Resources

An aerial photograph of a large, deep reservoir, likely Lake Mead, situated in a rugged desert canyon. The water is a deep blue, contrasting with the tan, rocky walls of the canyon. Several smaller reservoirs and canyons are visible in the background, creating a complex, layered landscape. The lighting suggests a bright, sunny day, casting shadows that emphasize the textures of the rock formations.

Law of the River & Current Operations

- 1922 Colorado River Compact
- 2007 Interim Guidelines
- 2019 Drought Contingency Plans
 - Drought Response Operations Agreement (DROA)
- 2023 SEIS Process

6-State Consensus-Based Modeling Approach

Upper Basin Components

- Recognition of hydrologic shortages
- Additional voluntary conservation measures through System Conservation Pilot Program (SCPP)
- Consideration of additional releases from Upper Basin reservoirs, pursuant to all provisions of the Drought Response Operations Agreement
- Constrained release tiers (no balancing)
- Reduced releases to protect 3500'

Lower Basin Components

- Reductions in Lower Basin deliveries of 1.54 MAF/year to address evaporation and losses
- Additional Lower Basin reductions at Mead <1050' and <1030'
- Additional reductions as necessary to protect Mead elevation 1000'



COLORADO
Colorado Water
Conservation Board
Department of Natural Resources

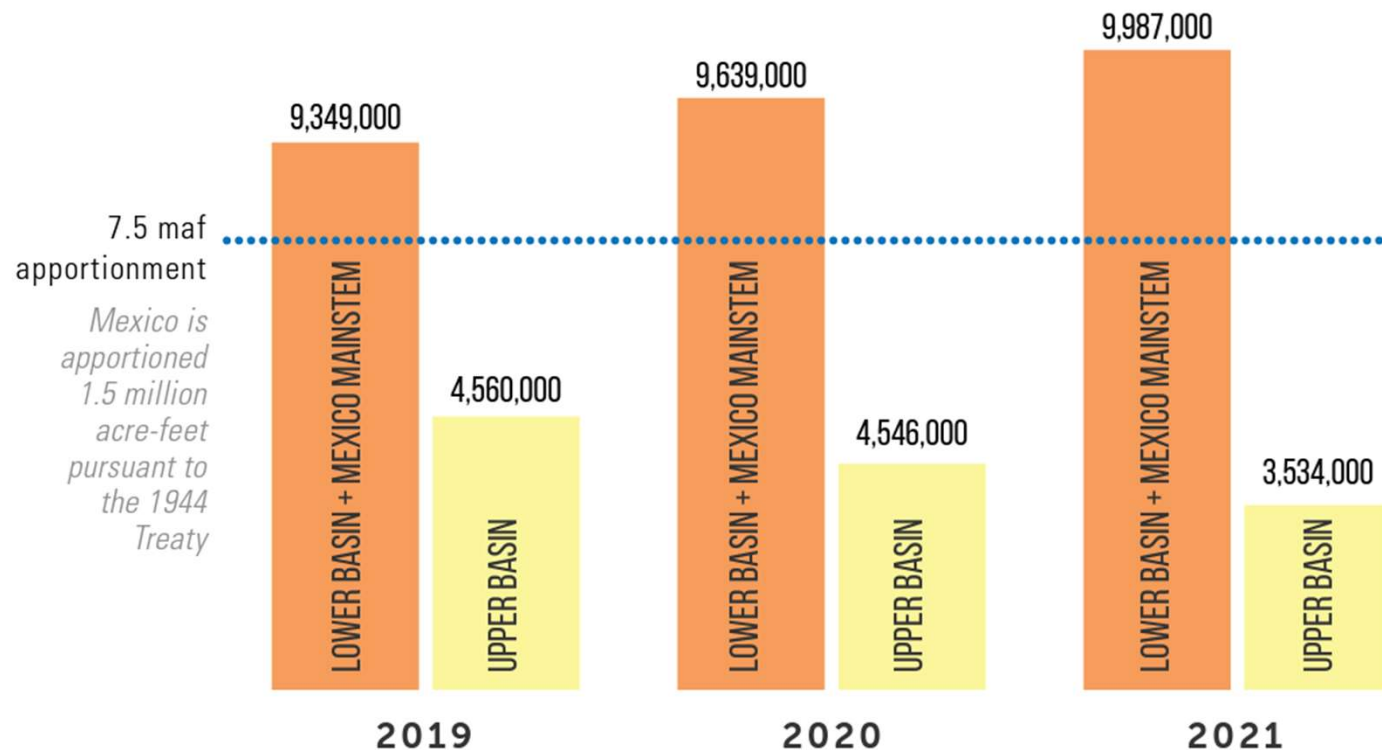
Five Point Plan

1. Finding ways to voluntarily conserve water (including SCPP)
2. Continuing the Demand Management Feasibility Investigation
3. Collaborating with the other Upper Basin states on reservoir releases (DROA) to protect Lake Powell as needed
4. Getting better data to monitor and measure our water use
5. Living within the means of what the river provides, through the application of strict administration according to priority.



COLORADO
Colorado Water
Conservation Board
Department of Natural Resources

Consumptive Use by Basin, 2019-2021



WATER USE BY BASIN

Lower Basin use only includes Mainstem Colorado River use by the Lower Basin States and Mexico, as calculated by the Upper Colorado River Commission. Tributary use is not included in this calculation.

Next Steps

- Ongoing implementation of **Five-Point Plan**, including System Conservation Pilot Program
- **Continued discussions** with Basin States, Tribal Nations, water users, and others
- Reclamation to analyze options in a **Supplemental Environmental Impact Statement** (Spring 2023)



COLORADO

Colorado Water
Conservation Board

Department of Natural Resources

FUNDING PROGRAMS

GRANTS AND LOANS

- Loan Program
- Water Supply Reserve Fund Grants
- Water Plan Grants
- Colorado Watershed Restoration Grants
- Federal Technical Assistance Grants

* CWCB Loan Program can be used as match for most grants

* Applicants are encouraged to choose 1 CWCB grant program per project



COLORADO
Colorado Water
Conservation Board
Department of Natural Resources



Projects in Poudre - Cameron Peak Fire

- Recovery and resilience of Cache la Poudre River after wildfire fish kill (CSU)
- Cameron Peak Post-Fire EWP Measures (Larimer County)
- Landscape Scale Post-Fire Mitigation for the Cameron Peak Fire to Protect Critical Watershed Values - Phase 4 (City of Greeley, Water & Sewer Department)

Projects in Poudre - Watershed Health

- Poudre Headwaters Restoration - Grand Ditch Barrier (Trout Unlimited)
- Campbell Creek Restoration (Wildlands Restoration Volunteers)
- Lower Cache la Poudre Priority Reach design Project and Fish Passage Design for Whitney and BH Eaton Reach, (Coalition for the Poudre River Watershed)
- Hall-133 Riparian Restoration (Poudre Learning Center Foundation)

Projects in Poudre - Education & Outreach

- Poudre Learning Center Water Education & Outreach in the South Platte River Basin (Poudre Learning Center Foundation)
- Water Legacy: Documenting Knowledge for Future Generations (Poudre Heritage Alliance)
- Engaging Stakeholders & Communities in the Poudre through Citizen Science, Collaboration & Outreach (Coalition for the Poudre River Watershed)

Collaboration



Photo: Amtec/flickr

THANK YOU

Rebecca Mitchell,
Director, Colorado Water Conservation Board
Colorado River Commissioner
Rebecca.Mitchell@state.co.us



COLORADO
Colorado Water
Conservation Board
Department of Natural Resources



With moderator Zac Thode

WATER & AFFORDABLE HOUSING

Erik Dial



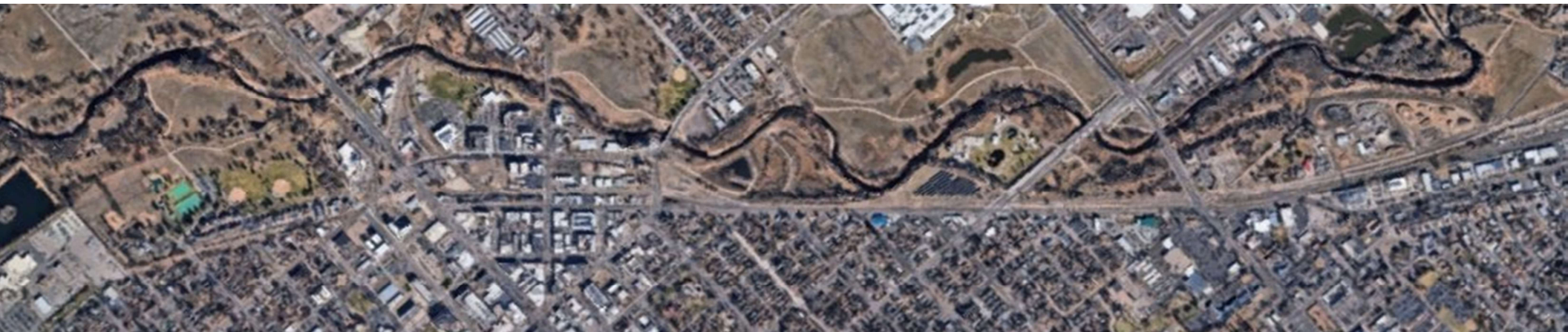
KC McFerson



Meagan Smith



Patrick McMeekin





Setting the Foundation: Land Use, Housing, Water

3.3.2023



COLORADO
Department of Local Affairs
Division of Local Government



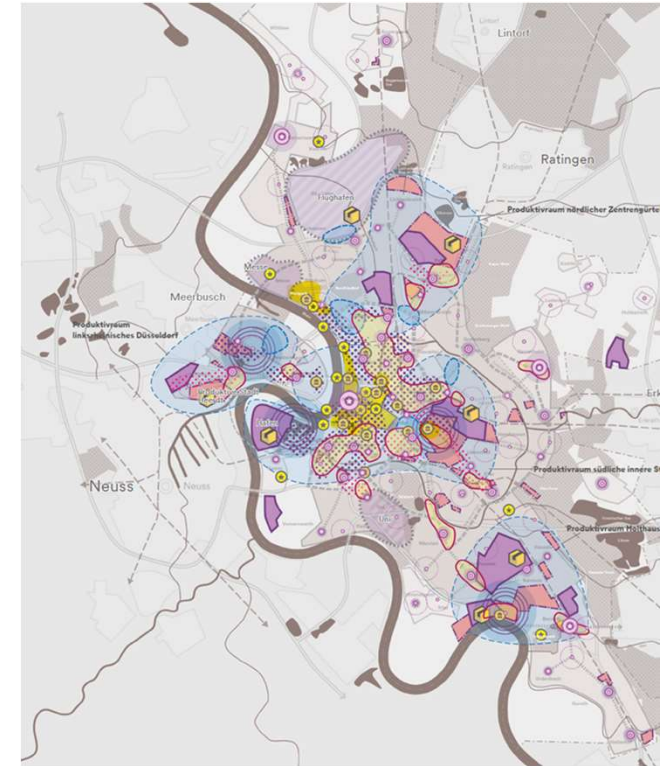
Why Land Use Planning?



The good



The bad



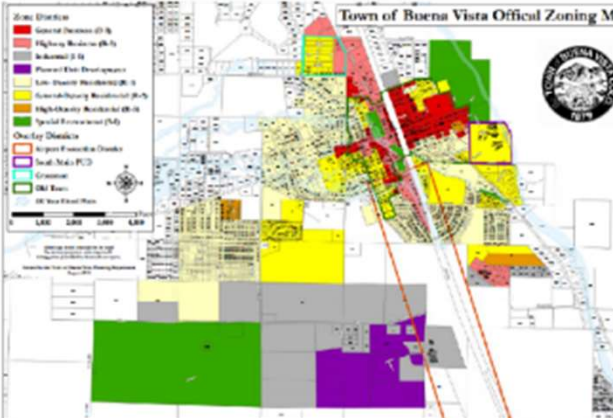
COLORADO
Department of Local Affairs
Division of Local Government



Colorado Land Use Planning

- Long-range planning
- Current planning

Town of Buena Vista Official Zoning Map



**CHAFFEE COUNTY
PLANNING & ZONING DEPARTMENT**
P.O. BOX 609 PHONE (719) 530-5565
SALIDA, CO 81201 FAX (719) 539-7442
WEBSITE www.chaffeecounty.org

APPLICATION TO BOARD OF ADJUSTMENT
Application Fee \$120.00 Application filing deadline is the second Friday of each month for next month's hearing

GENERAL INFORMATION

REQUEST (SETBACK VARIANCE, SIGN, ETC.) _____

PROPERTY ADDRESS OR GENERAL LOCATION _____

NAME OF APPLICANT _____

MAILING ADDRESS _____

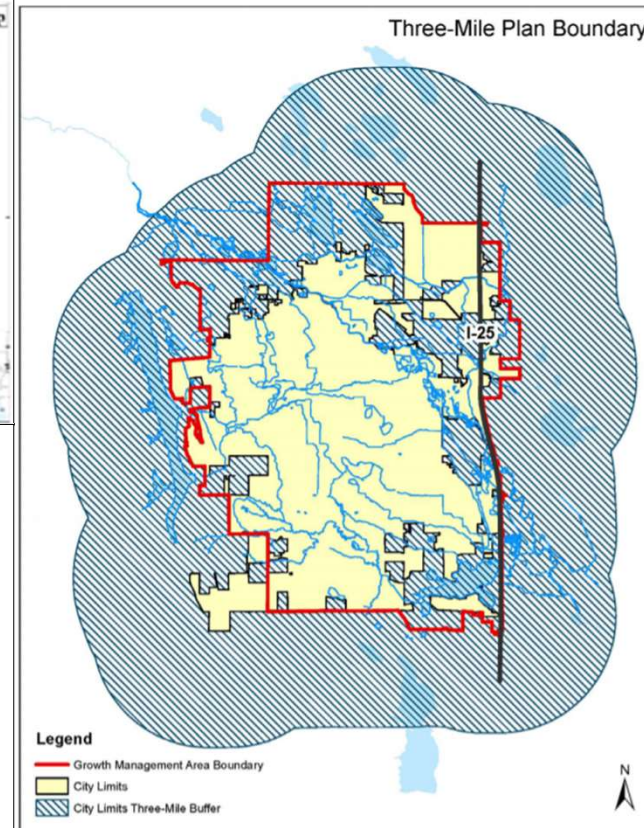
TELEPHONE _____ FAX _____

E-MAIL ADDRESS _____

EXISTING ZONING _____

LEGAL DESCRIPTION _____

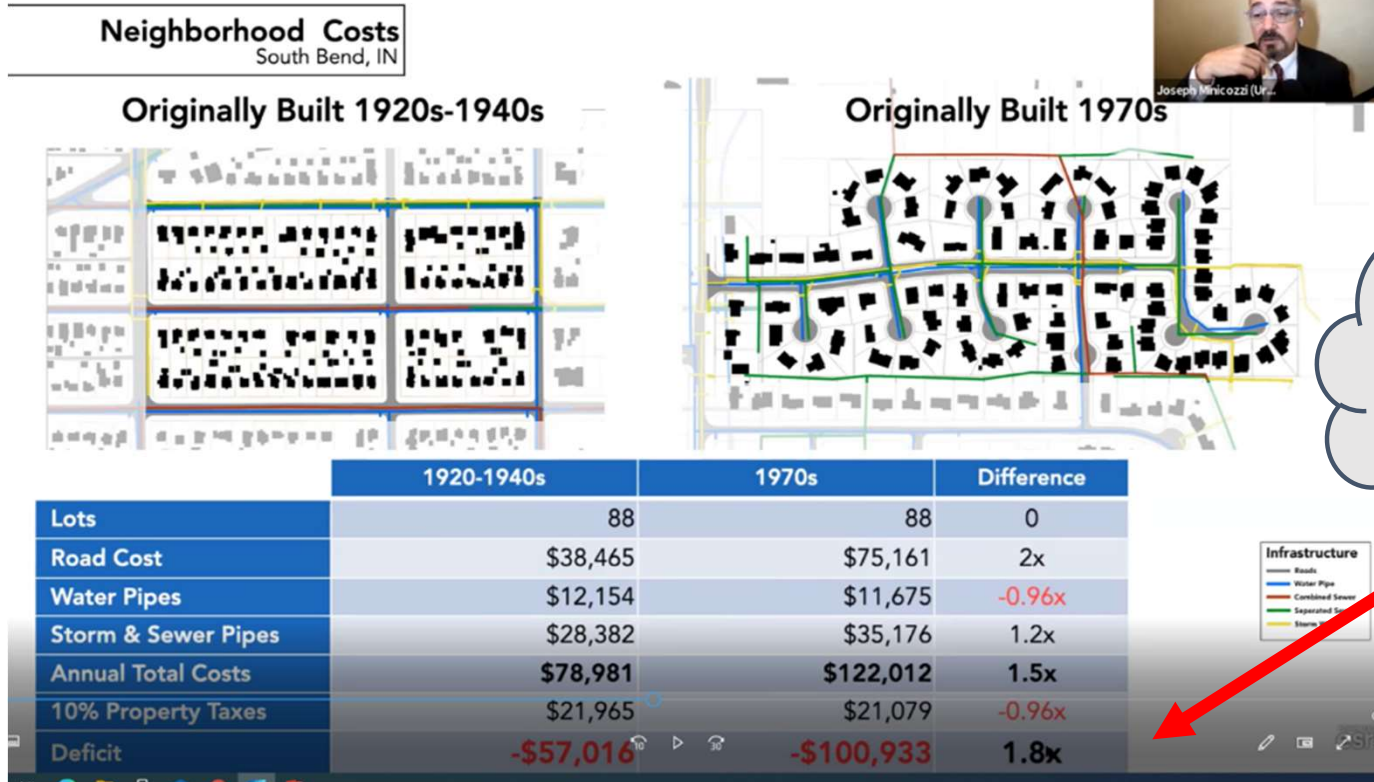
The following information must be submitted by the second Friday of the month prior to appointment with the Board of Adjustment. Seven (7) copies of the application must be packaged in a bound or file form with each set containing all the required information.



COLORADO
Department of Local Affairs
Division of Local Government



Land Use Planning and \$\$\$



\$ impact of sustainable development patterns!



COLORADO
Department of Local Affairs
Division of Local Government

CDO
Community Development Office

Land Use Affects Water Use

- Need more water-efficient land use patterns
- Decreasing demand, using “alternative” supplies is best done at the planning stage
- Need solutions so Colorado communities thrive despite water scarcity



COLORADO
Department of Local Affairs
Division of Local Government



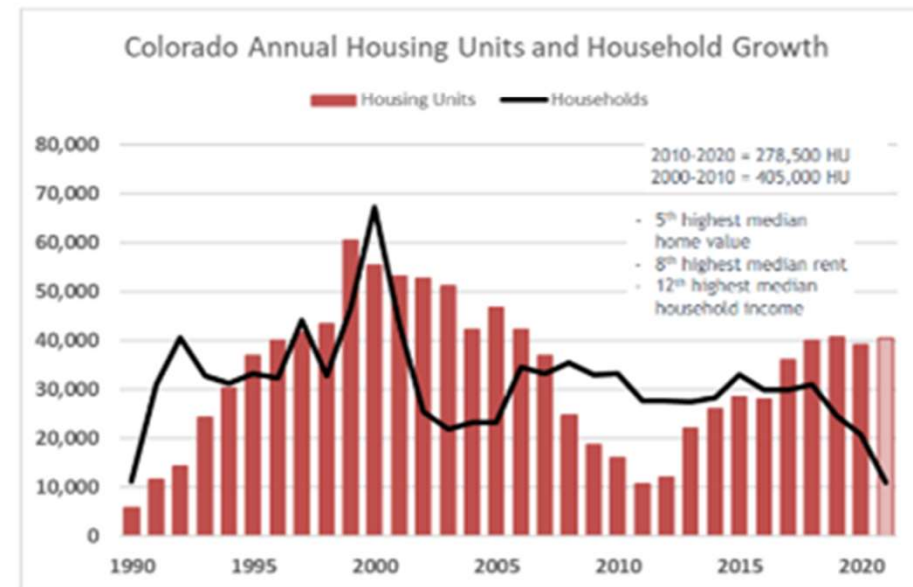
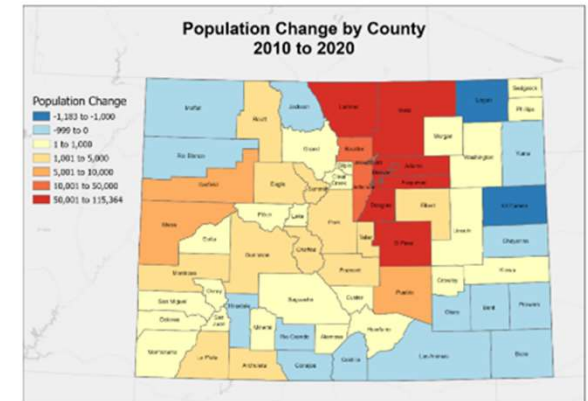
Also, We're in a Complex Crisis

Supply

- Fewer units built
- Financing - slow return after Great Recession
- Supply chain & tight labor
- Public will - NIMBY, anti-growth/density

Demand

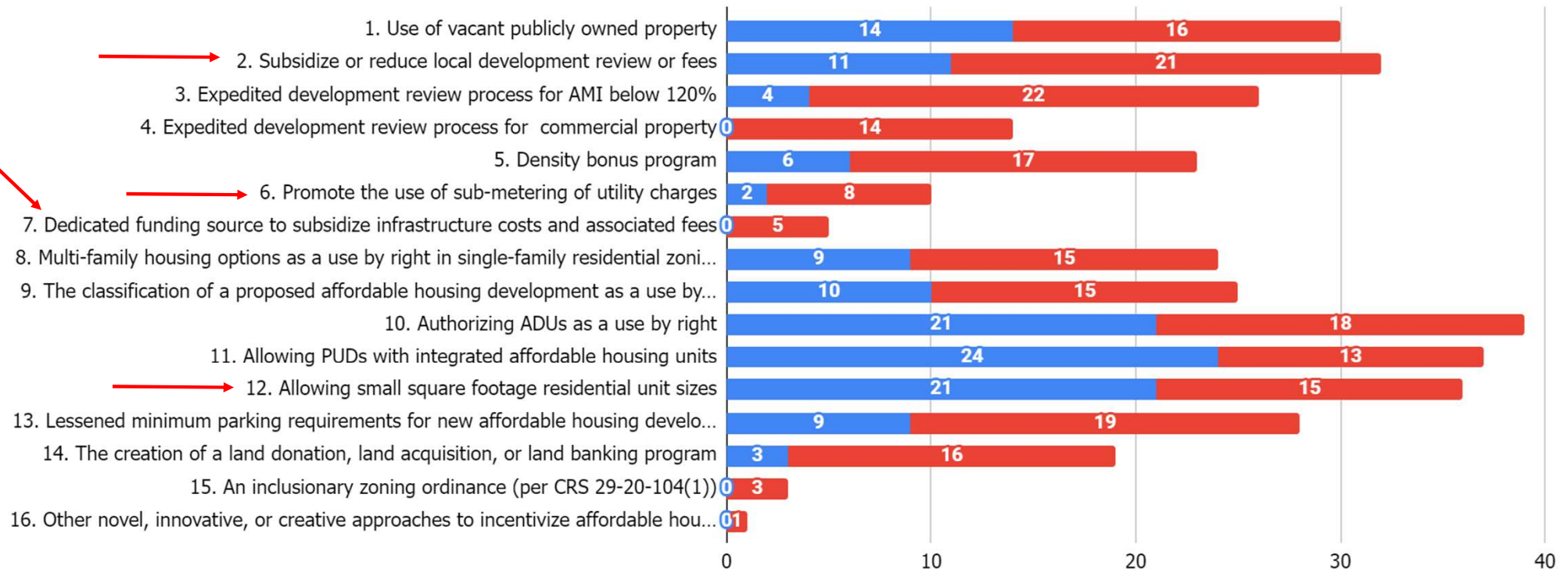
- Job growth = people
- Aging - smaller household size but same house
- Millennials - prime home buying & 2nd home buying
- Gen Z - first time apartment and home buying
- More money - didn't travel / weddings, stimulus
- Investors - institutional and cannabis firms (often holding vacant)



DOLA-Funded Local Work

IHOP Qualifying Strategy Implementation

■ Previously adopted (134 total) ■ Listed to pursue (218 total)

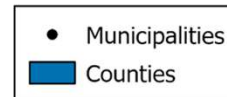
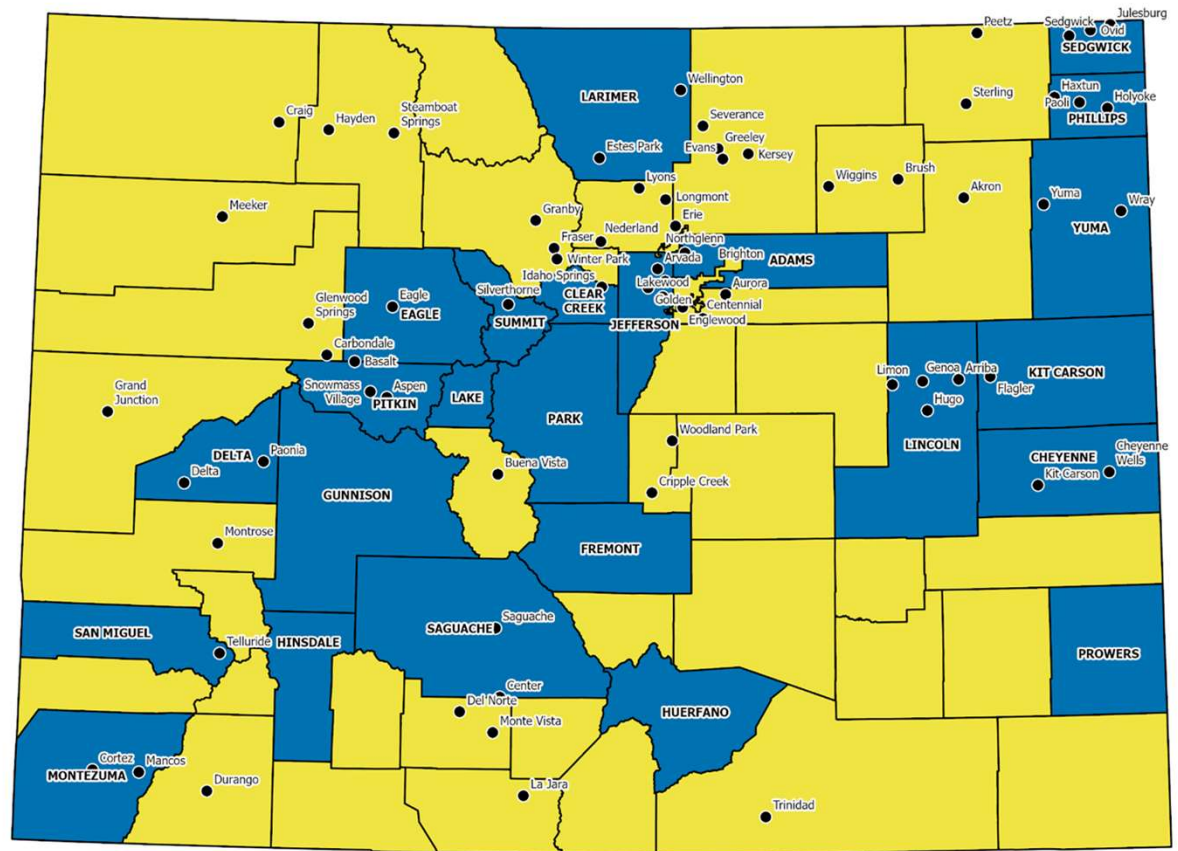


DOLA-Funded Local Work - IMPACTS

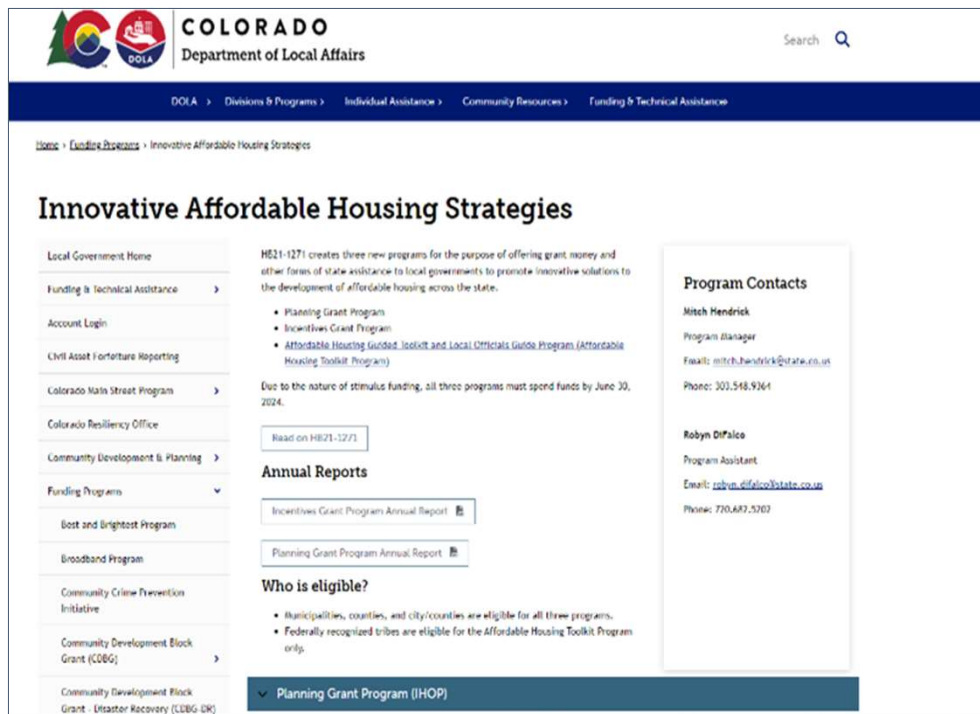
Planning Grant Program Update

Round 1-7 Awards

- 62 Planning Grants
- \$5.4M Awarded
- 313 qualifying strategies pursued



Resources



COLORADO
Department of Local Affairs

Home > Funding Programs > Innovative Affordable Housing Strategies

Innovative Affordable Housing Strategies

Local Government Home

Funding is Technical Assistance >

Account Login

Civil Asset Forfeiture Reporting

Colorado Main Street Program >

Colorado Resiliency Office

Community Development & Planning >

Funding Programs ▾

- Best and Brightest Program
- Broadband Program
- Community Crime Prevention Initiative
- Community Development Block Grant (CDBG) >
- Community Development Block Grant - Disaster Recovery (CDBG DR)

HB21-1271 creates three new programs for the purpose of offering grant money and other forms of state assistance to local governments to promote innovative solutions to the development of affordable housing across the state.

- Planning Grant Program
- Incentives Grant Program
- Affordable Housing Guided Toolkit and Local Officials Guide Program (Affordable Housing Toolkit Program)

Due to the nature of stimulus funding, all three programs must spend funds by June 30, 2024.

Read on HB21-1271

Annual Reports

Incentives Grant Program Annual Report

Planning Grant Program Annual Report

Who is eligible?

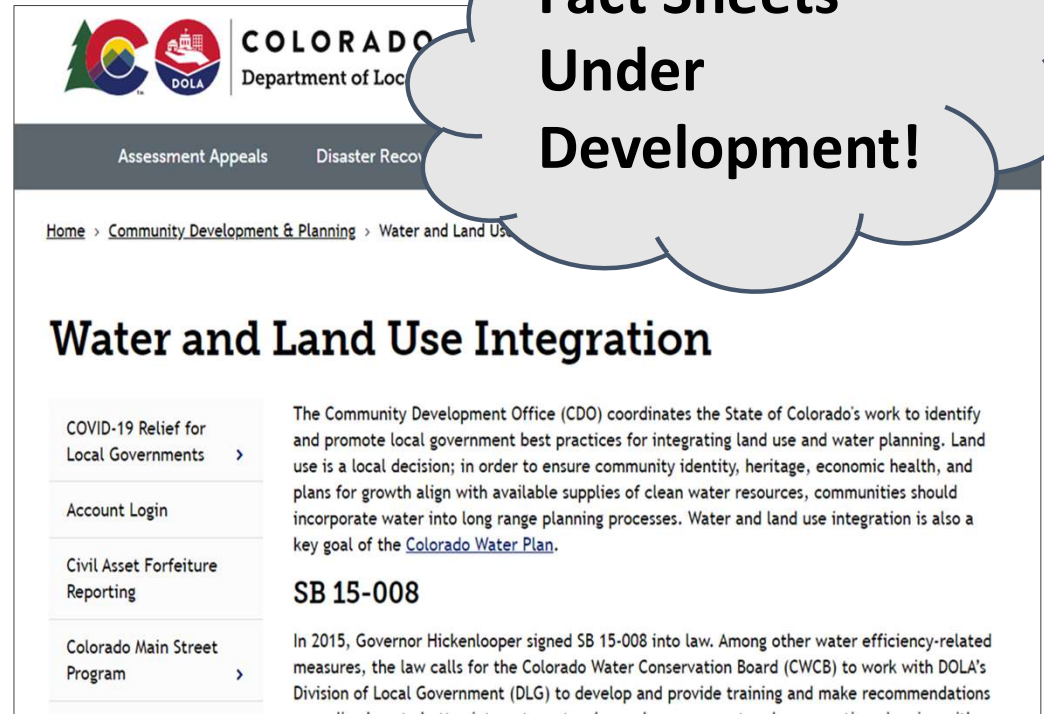
- Municipalities, counties, and city/counties are eligible for all three programs.
- Federally recognized tribes are eligible for the Affordable Housing Toolkit Program only.

Program Contacts

Mitch Hendrick
Program Manager
Email: mitch.hendrick@state.co.us
Phone: 303.548.9364

Robyn Difalco
Program Assistant
Email: robyn.difalco@state.co.us
Phone: 720.682.5203

Planning Grant Program (IHOP)



COLORADO
Department of Local Affairs

Assessment Appeals Disaster Recovery

Home > Community Development & Planning > Water and Land Use

Water and Land Use Integration

COVID-19 Relief for Local Governments >

Account Login

Civil Asset Forfeiture Reporting

Colorado Main Street Program >

The Community Development Office (CDO) coordinates the State of Colorado's work to identify and promote local government best practices for integrating land use and water planning. Land use is a local decision; in order to ensure community identity, heritage, economic health, and plans for growth align with available supplies of clean water resources, communities should incorporate water into long range planning processes. Water and land use integration is also a key goal of the [Colorado Water Plan](#).

SB 15-008

In 2015, Governor Hickenlooper signed SB 15-008 into law. Among other water efficiency-related measures, the law calls for the Colorado Water Conservation Board (CWCB) to work with DOLA's Division of Local Government (DLG) to develop and provide training and make recommendations

Fact Sheets
Under
Development!

Note: Model Land Use Code update during 2023!

Value Per Acre

Indianapolis, IN

Previous Sales Force E. Washington
\$2M per acre



Hardees on E.
\$444k per acre



Joseph Miccozzi (Ur...



URBAN3

2015

Apples to Apples

Comparing land use types



land consumed (acres)

13.4

0.15

county property taxes / acre

\$1.8K

\$22.7K

city retail taxes / acre

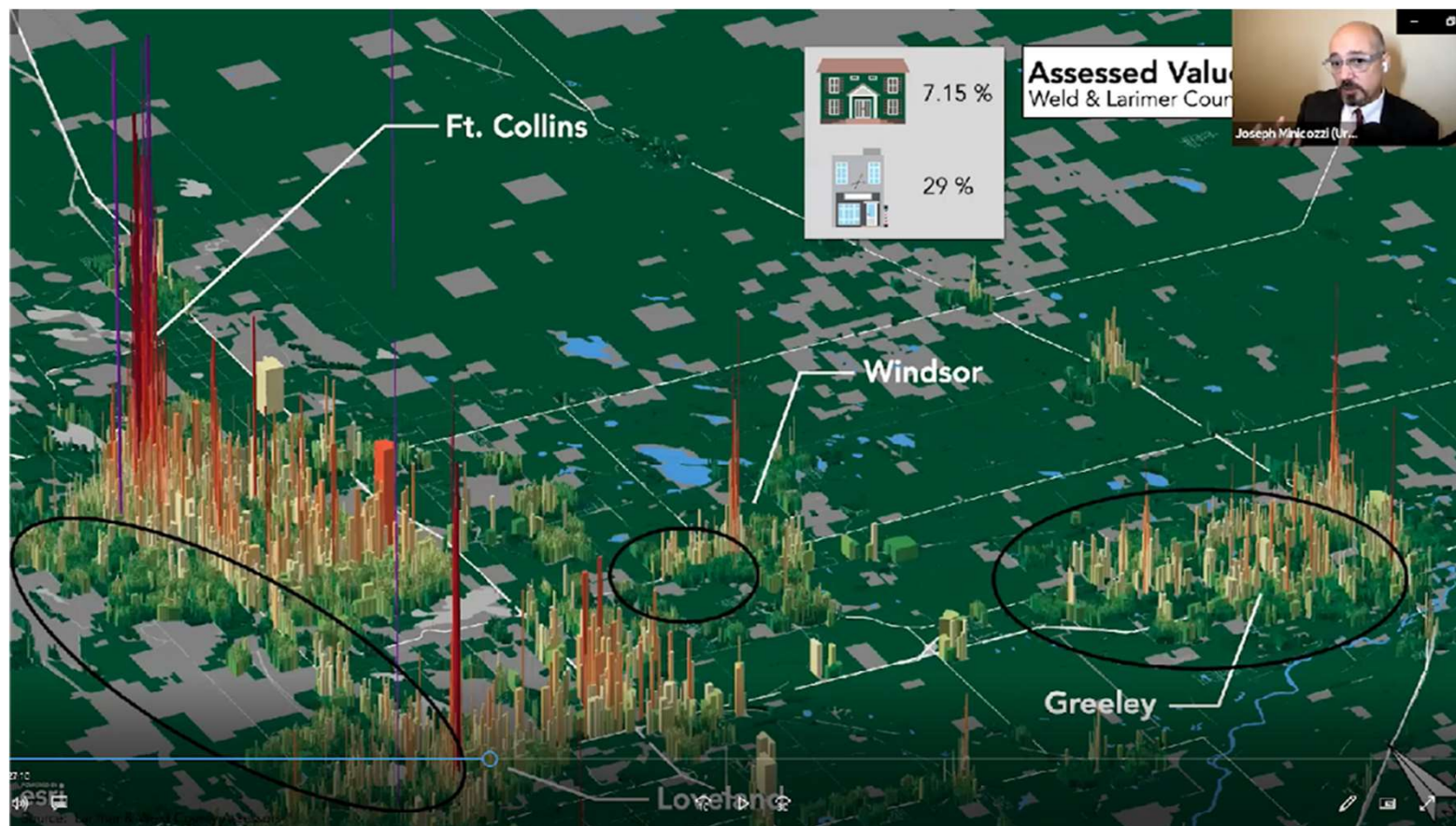
\$152K

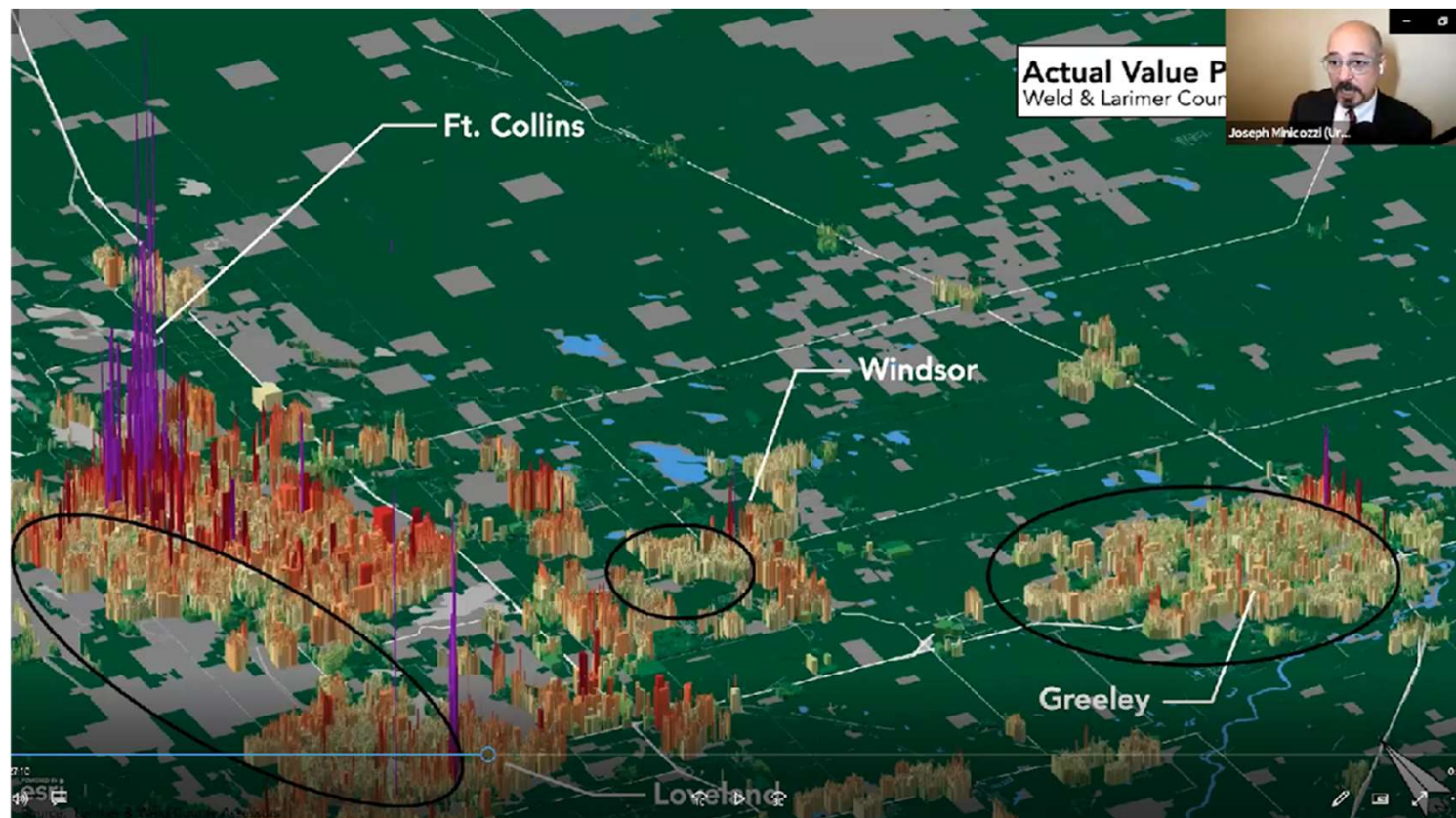
\$556K

jobs / acre

15

233



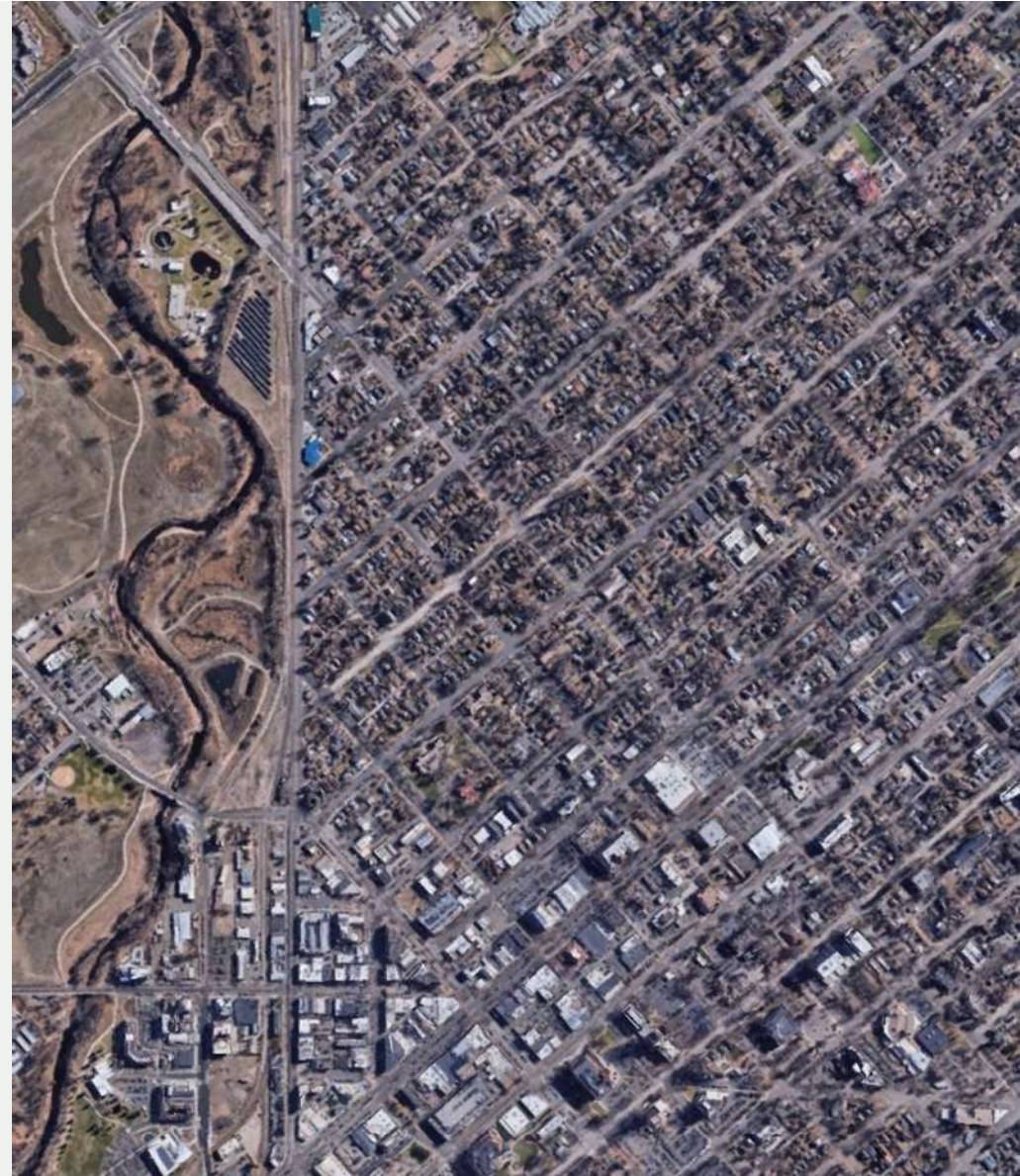


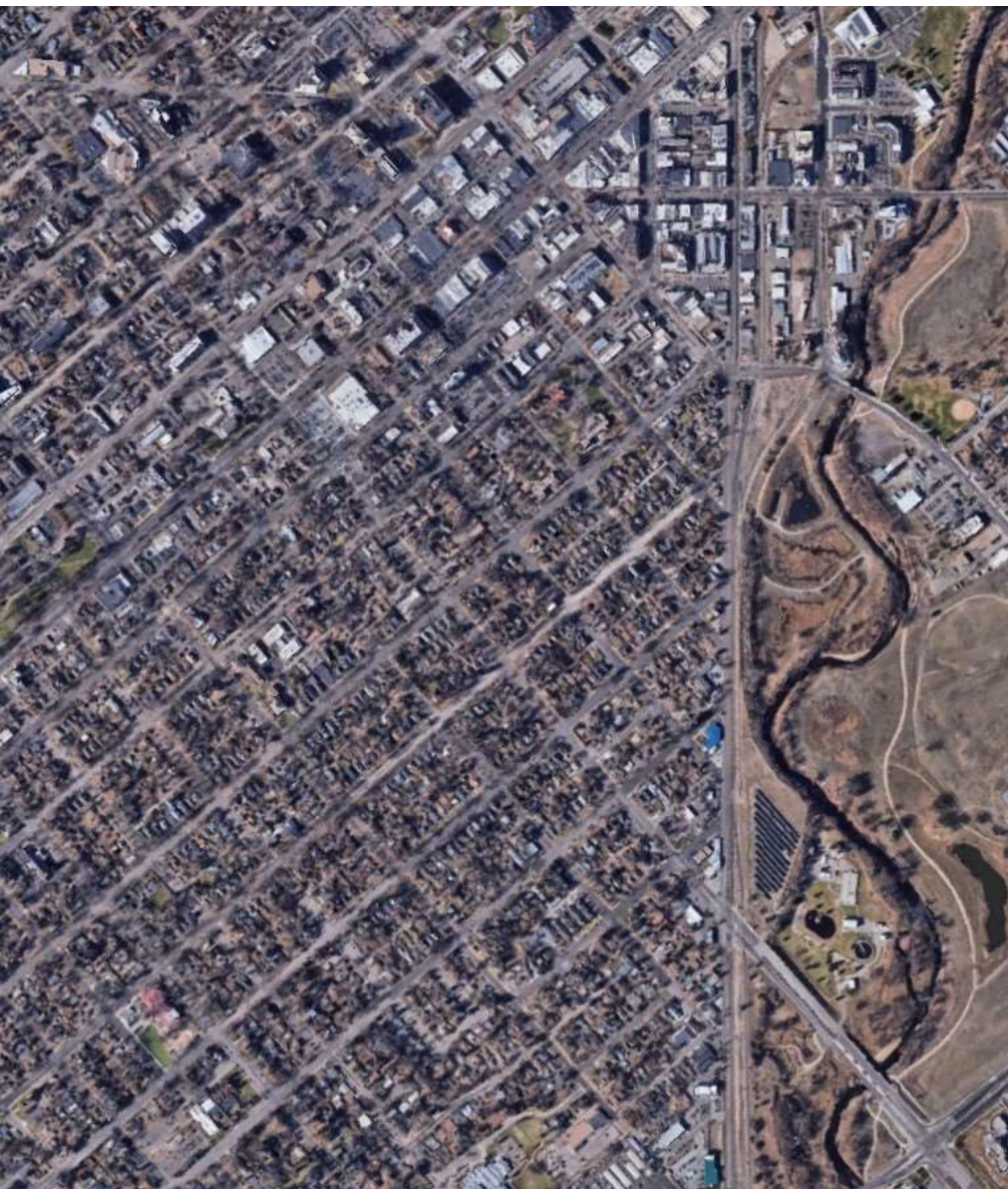
WATER & AFFORDABLE HOUSING



Erik Dial

Deputy Director of Utility
Finance and Customer Service





WATER & AFFORDABLE HOUSING



Meagan Smith

Deputy Director of Public
Works at Town of Wellington

WATER & AFFORDABLE HOUSING

Patrick McMeekin

Hartford Homes, President of Land Development



15:00



2023 Poudre Pioneer Award Winners



MARYLOU SMITH



REAGAN WASKOM



***Together, MaryLou and Reagan Founded not only the Poudre
Runs Through it, but also Water Literate Leaders of
Northern Colorado.***

For Over 10 years these two lead the CSU Water Center.

*Their water legacy will be felt for many years
to come.*

With moderator Brian Foss

WATER & AGRICULTURE

Adam Jokerst



Rob Johnson



Reid Maynard



Robert Graves





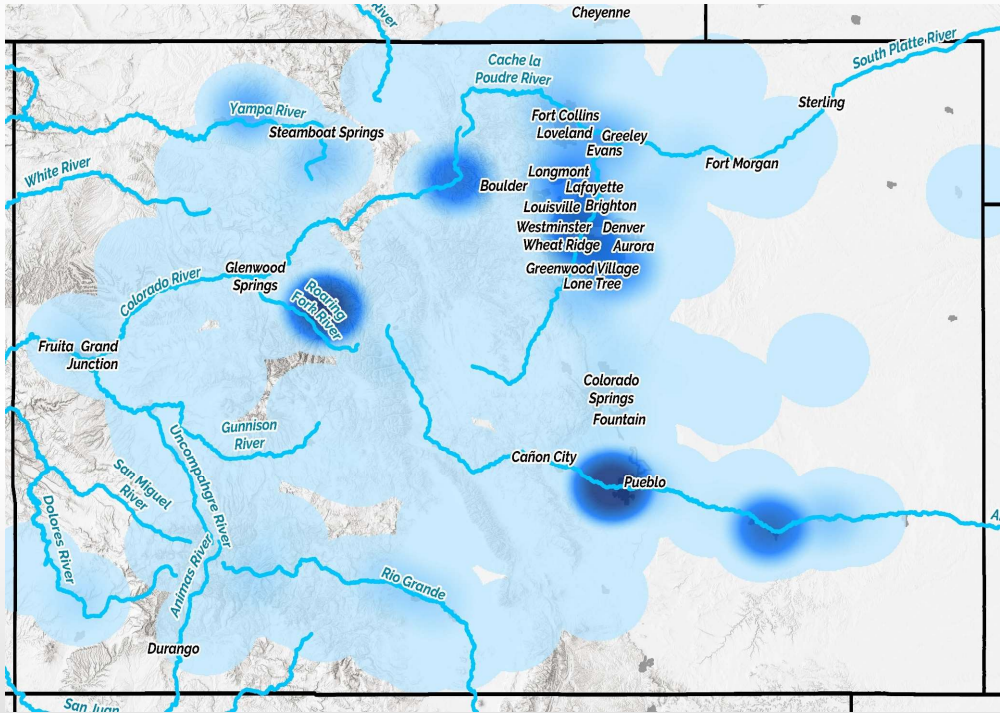
Colorado Water Market

2023 Poudre River Forum

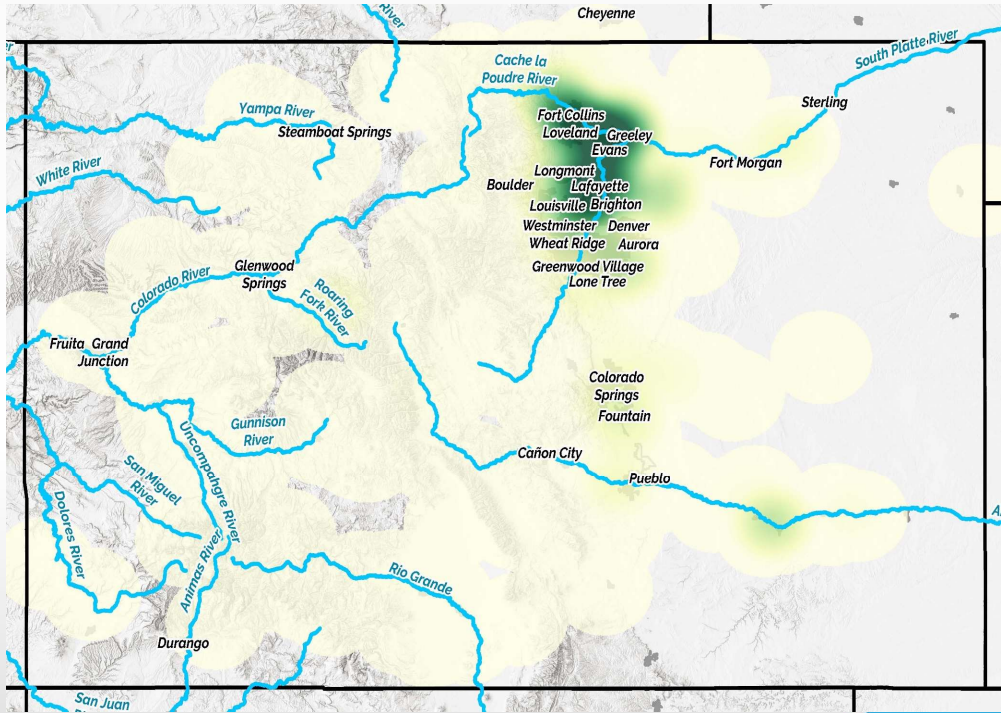


Water Market Overview

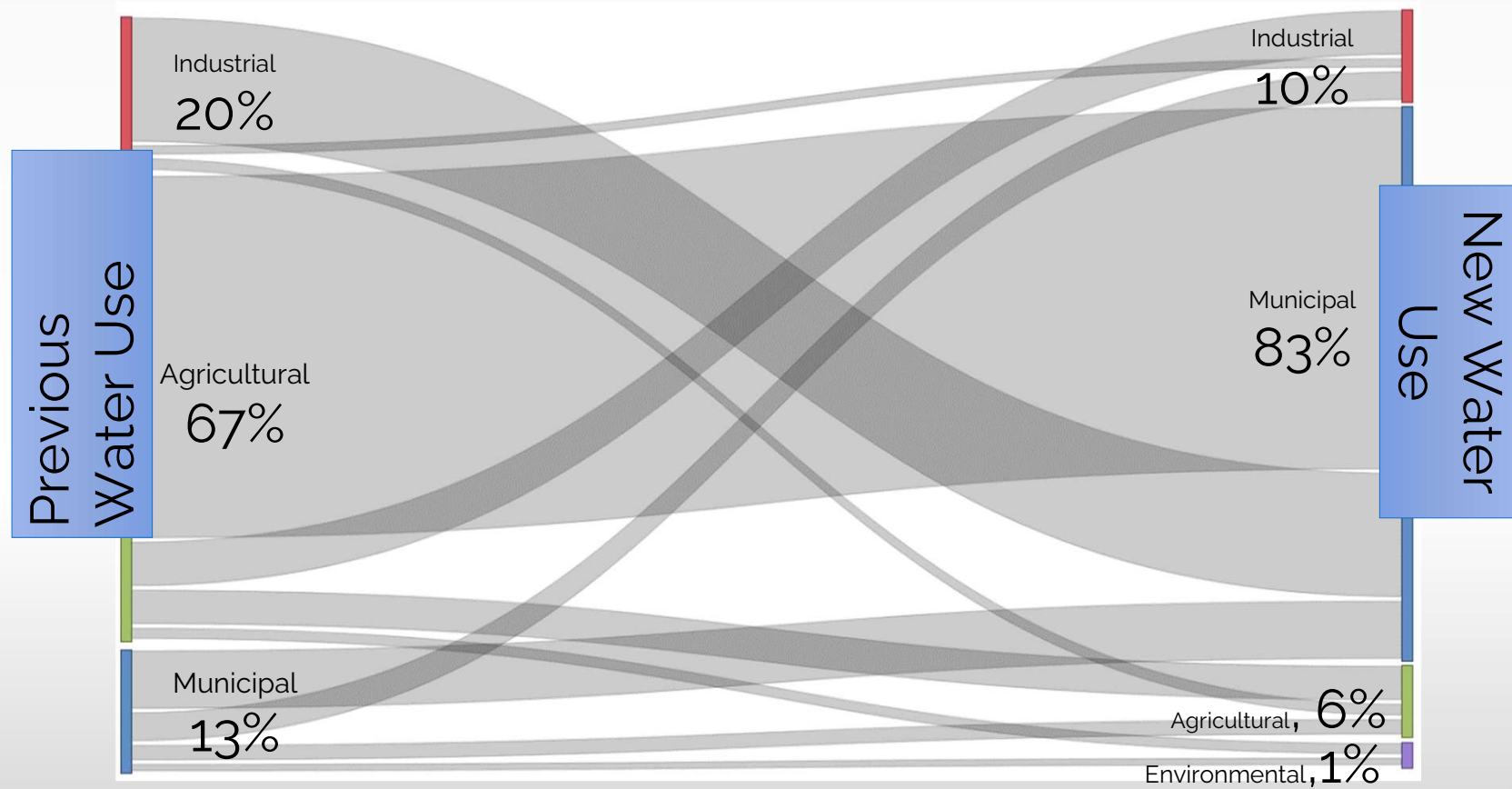
Trading Volume



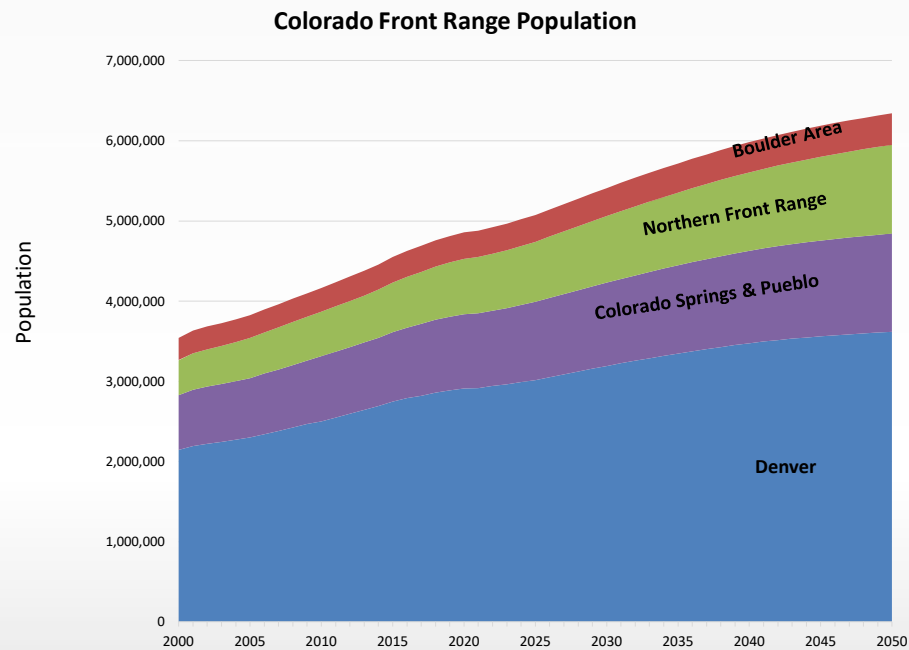
Trading Value



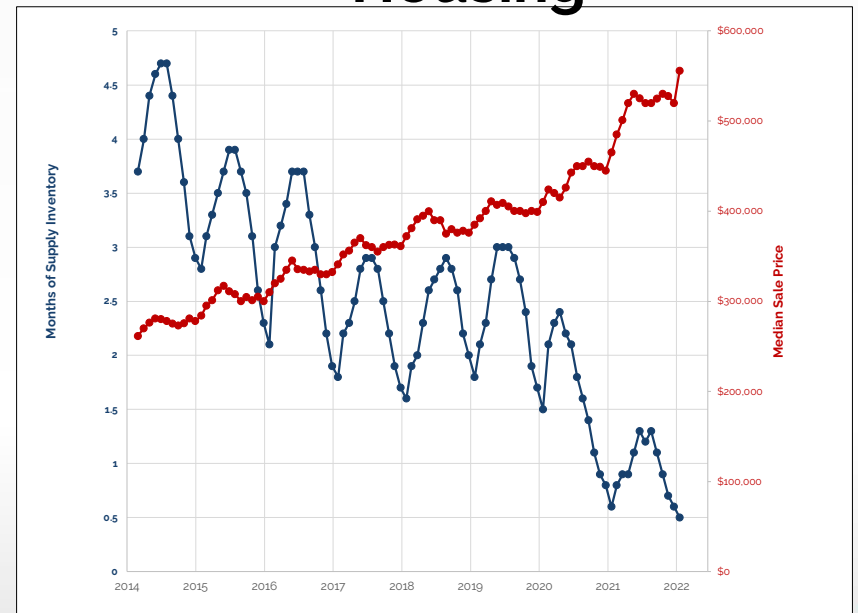
Water Market Overview



Water Market Drivers

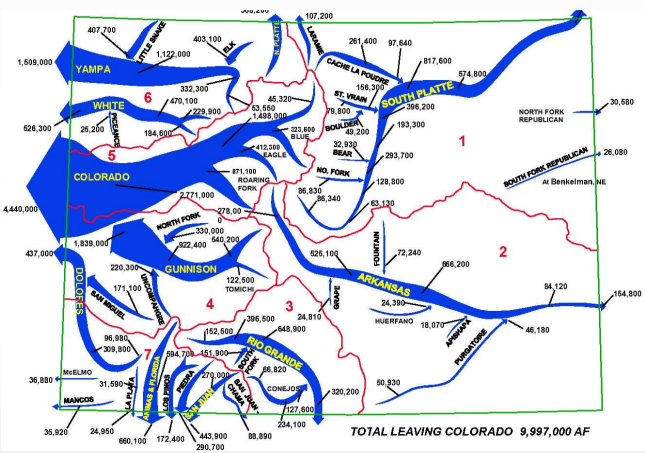


Housing



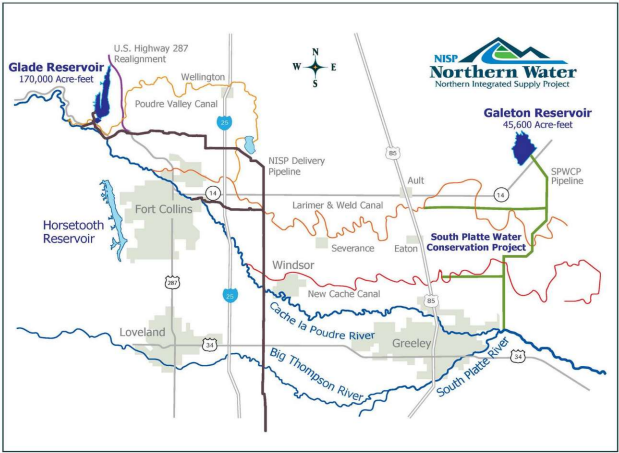
Water Market Drivers

Location



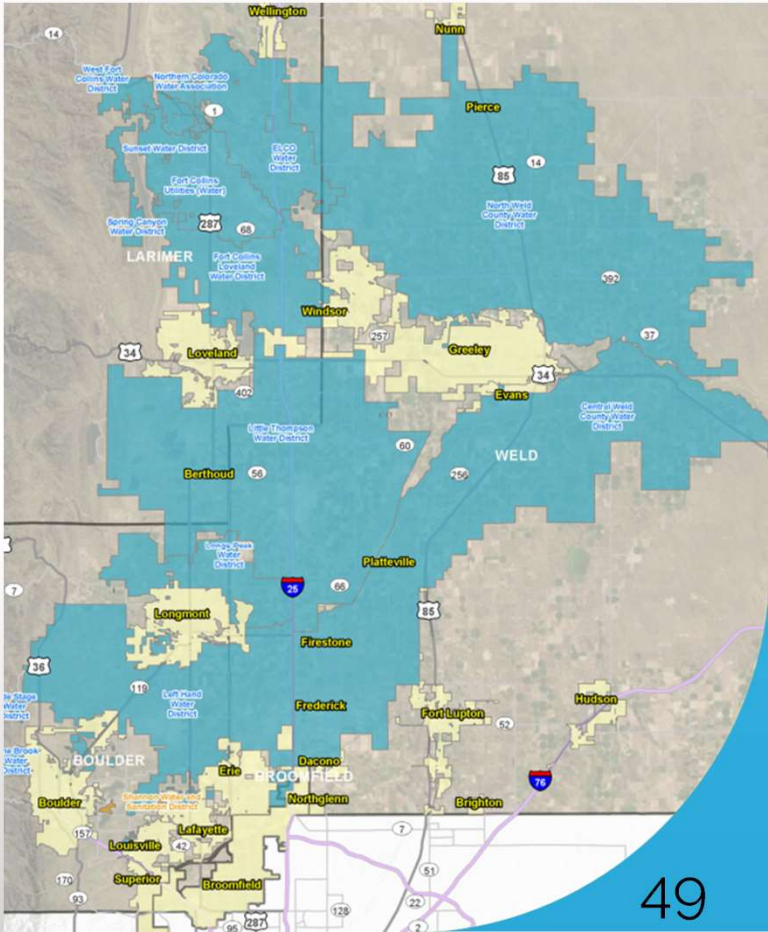
Courtesy: Colorado Division of Water Resources

Cost



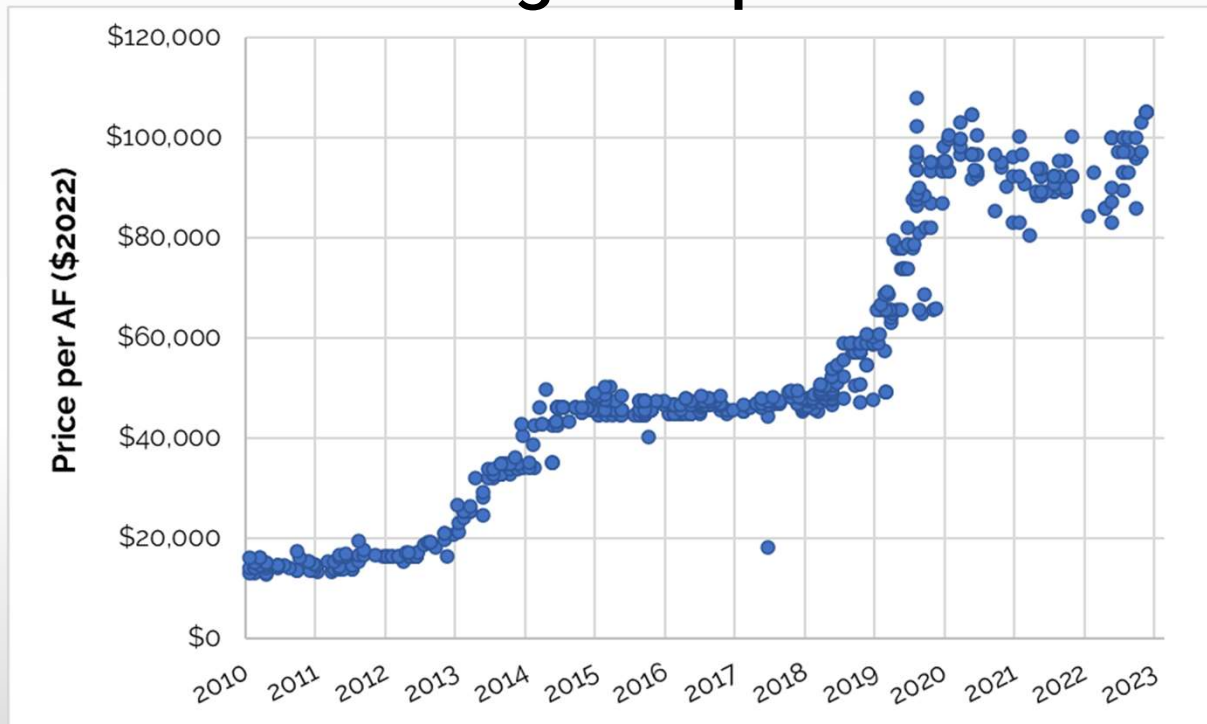
Courtesy: Northern Colorado Water Conservancy District

Competition

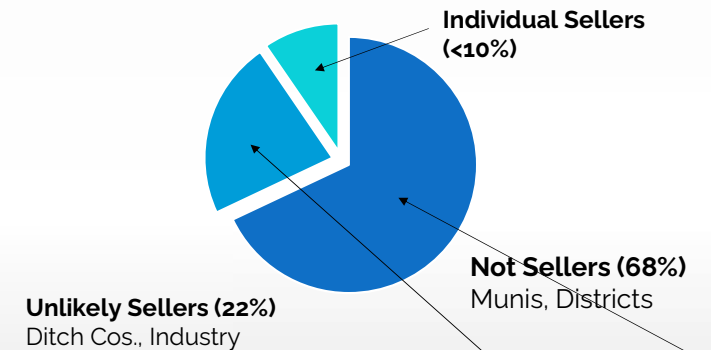


Pricing Trends - CBT

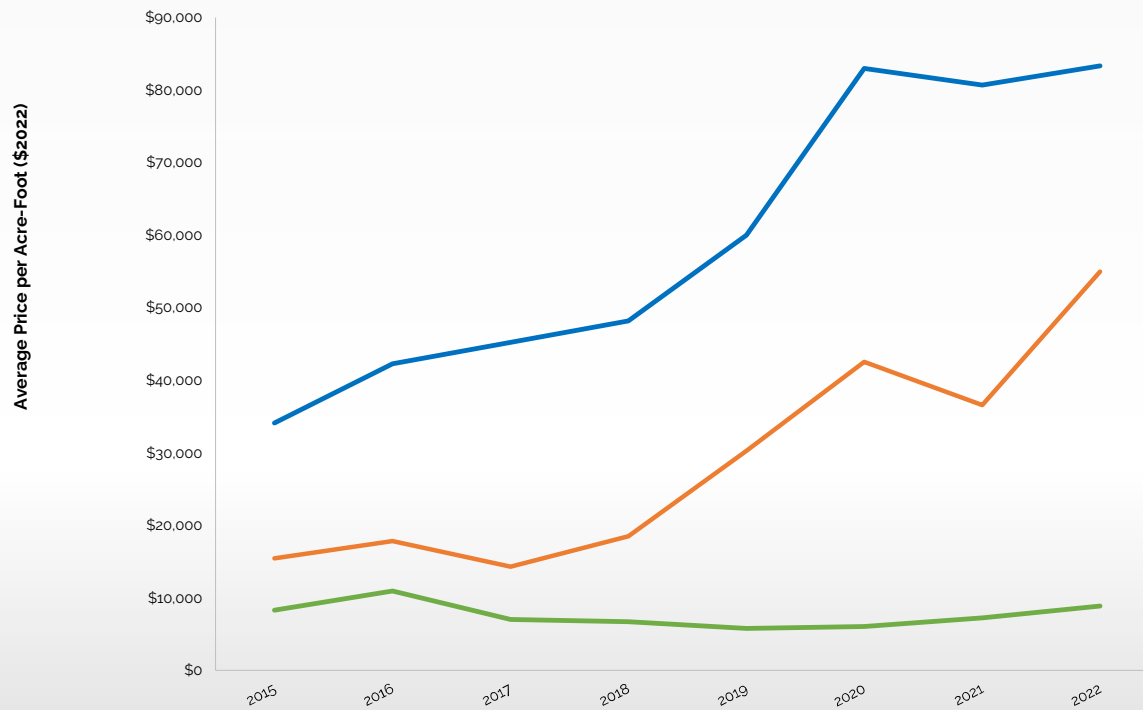
Colorado-Big Thompson Prices



CBT Ownership



Pricing Trends – Poudre River Ditches



**Share Includes
CBT**

**Accepted for municipal
dedication**

**Lower river, cannot be
dedicated**



Thank You

Adam Jokerst

jokerst@waterexchange.com

WATER & AGRICULTURE



Robert Graves
Owner



129 years of Dairy Farming in the Poudre Valley



1894



1936



1954



2009



2022

Ag is working in Northern Colorado

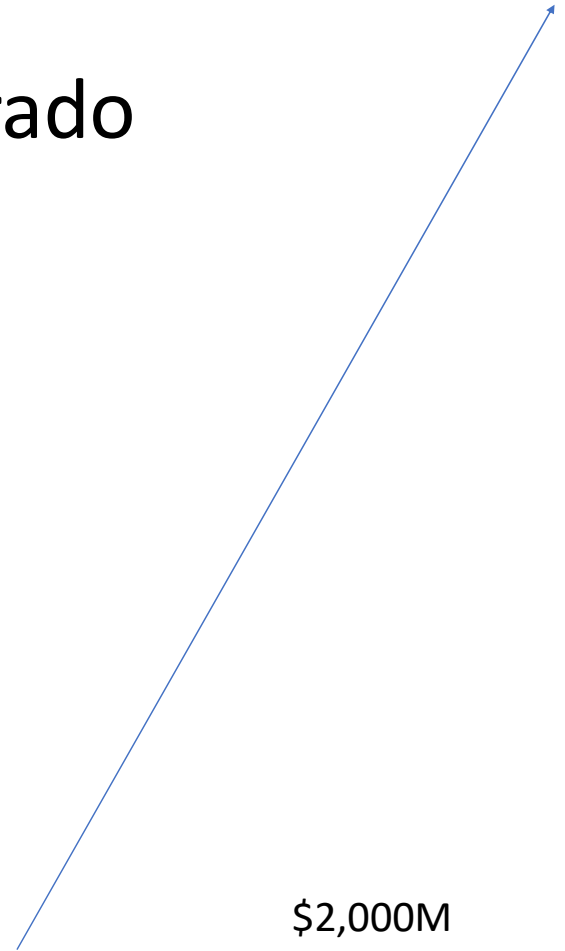


70,000 Dairy Cows
90,000 Irrigated Acres
140,000 af.

\$150M
Crops



\$2,000M
Milk, Cheese,
Yoghurt





WATER & AGRICULTURE

a. bruce

JOHNSON & ASSOCIATES

LAND RESOURCE SPECIALISTS



Rob Johnson
Owner

Vertical Farming: The Basics, Water Savings, And Energy Tradeoffs

Reid Maynard
Agriculture and Water Panel
Poudre River Forum
March 3, 2023



This material is based upon work supported by the National Science Foundation under Grant No. 1828902.

Any opinions, findings, and conclusions or recommendations expressed in this material are those of the author(s) and do not necessarily reflect the views of the National Science Foundation

Overview

- What is Vertical Farming?
- Vertical Farming and Water
- Energy and Pollution Tradeoffs



Vertical Farming: A Quick Overview

Facilities, Equipment, and Crops



Typical Facilities for Vertical Farms

Usually, vertical farms are indoors

“Plant Factory”



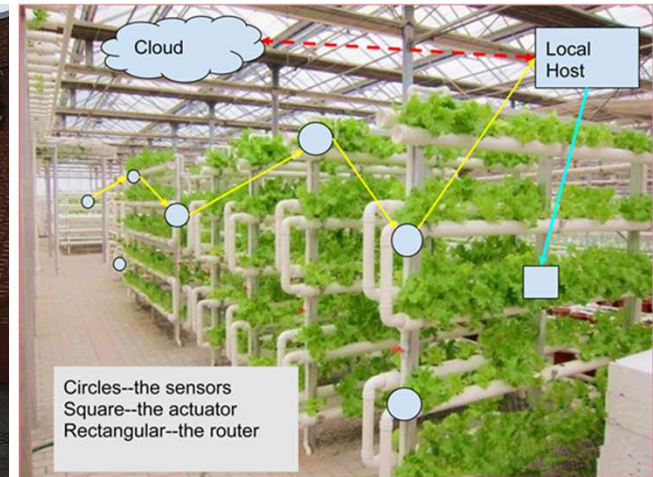
From Kosai et al. (2020).

Container Farm



From Liebman-Pelages et al. (2021).

Greenhouses

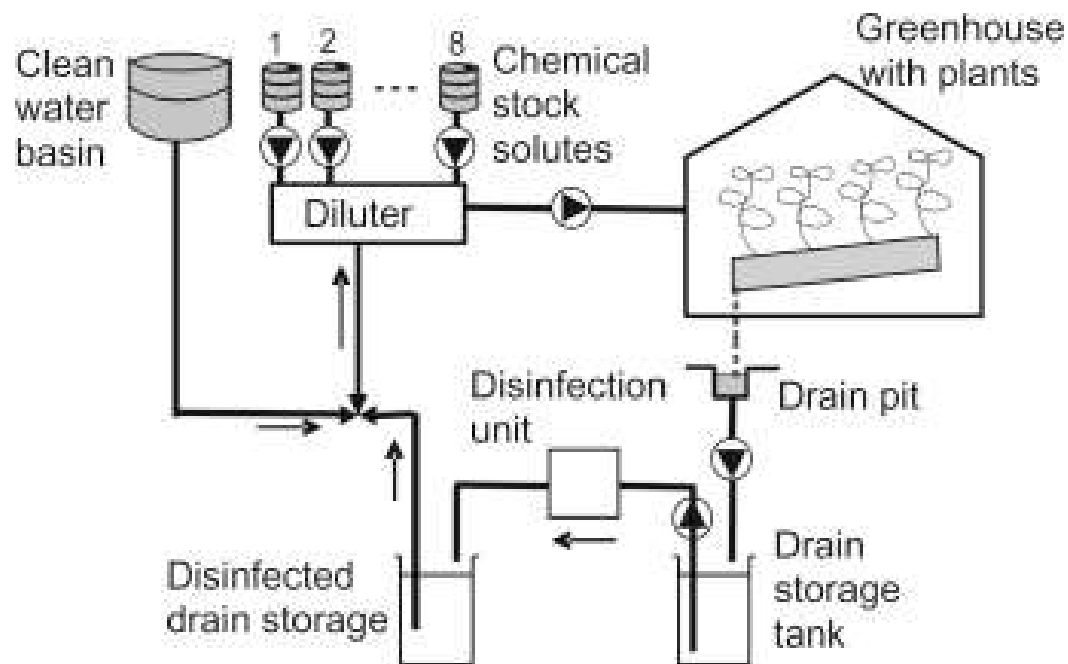


[This Photo](#) by Unknown Author is licensed under [CC BY-NC](#)

Vertical Farming is Soilless Agriculture

Usually, vertical farms are hydroponic

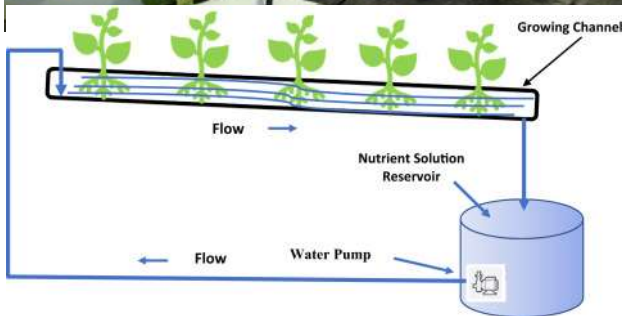
Water is mixed
with fertilizers
and other
chemicals



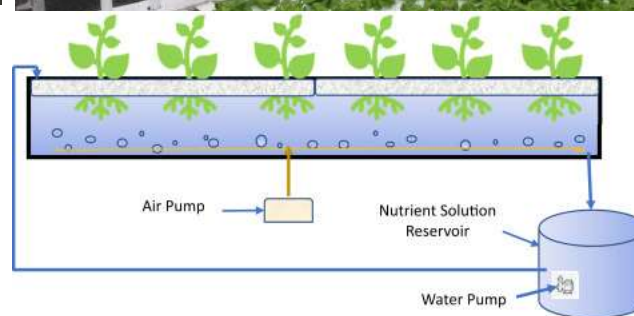
Solution
contacts with
plant roots for
irrigation and
fertilization

From van So et al. (2019).

Soilless Agriculture Types

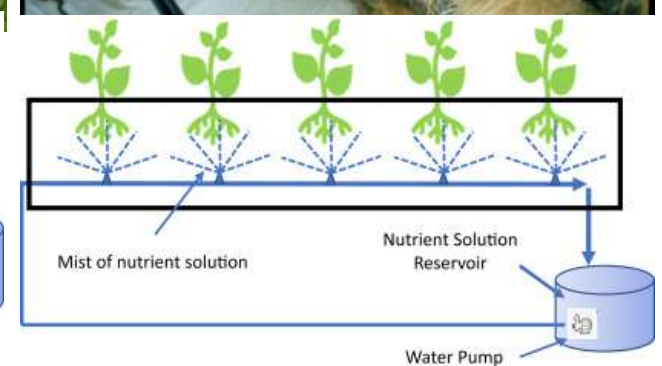


Nutrient Film
Technique



Deep Flow
Technique

Photos from van So et al. (2019).
Schematics from Neu & Masani (2022).



Aeroponics

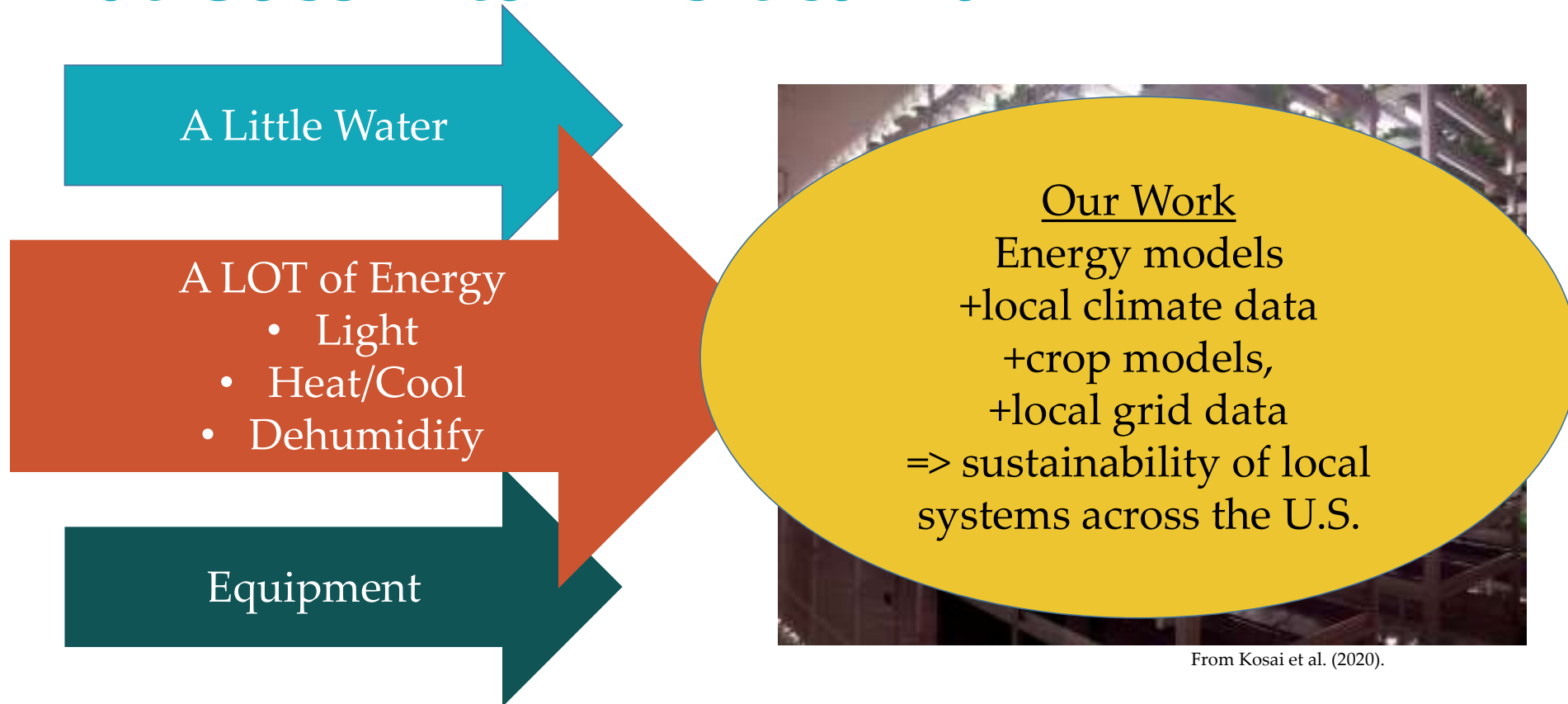
Crop Types

- Typically, dense-growing, fast-growing, prolific crops
- Lettuce, herbs, leafy greens are common
- Some vegetables: Tomatoes, peppers, cucumbers
- Strawberries, blueberries
- Mushrooms



[This Photo](#) by Unknown Author is licensed under [CC BY](#)

What Goes Into A Vertical Farm?



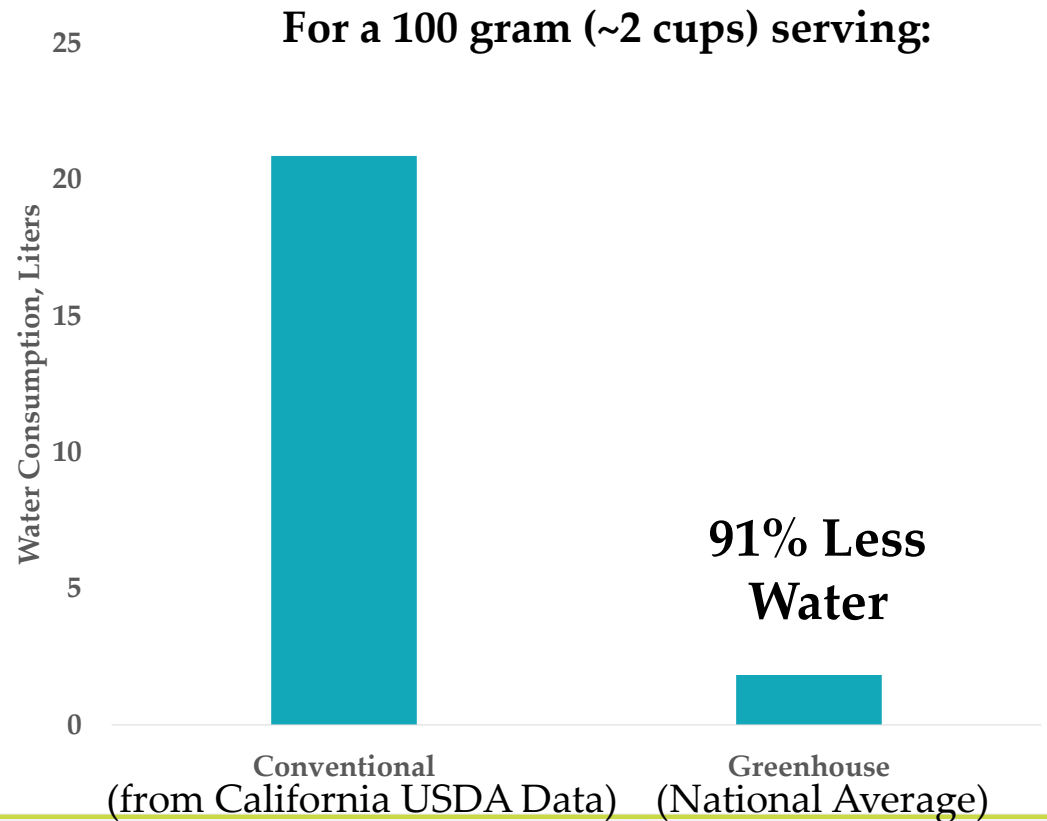


Vertical Farming and Water

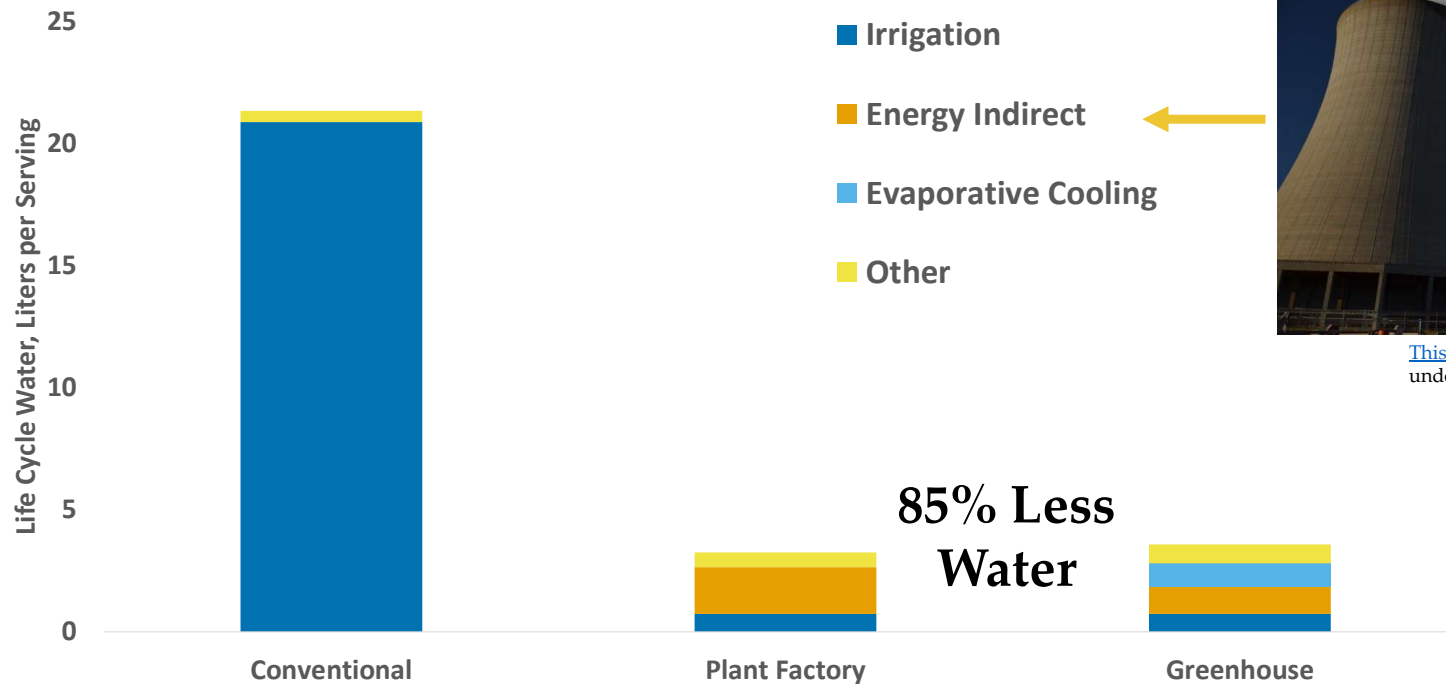
This Photo by Unknown Author is licensed under [CC BY-SA-NC](#)

Vertical Farms Use Less Irrigation Water

- Most indoor growers report use 90-95% less water than conventional methods
- For direct water consumption (including evaporative cooling), our model agrees



Vertical Farms Use Less Life Cycle Water



[This Photo](#) by Unknown Author is licensed under [CC BY-NC](#)

(from California USDA Data)

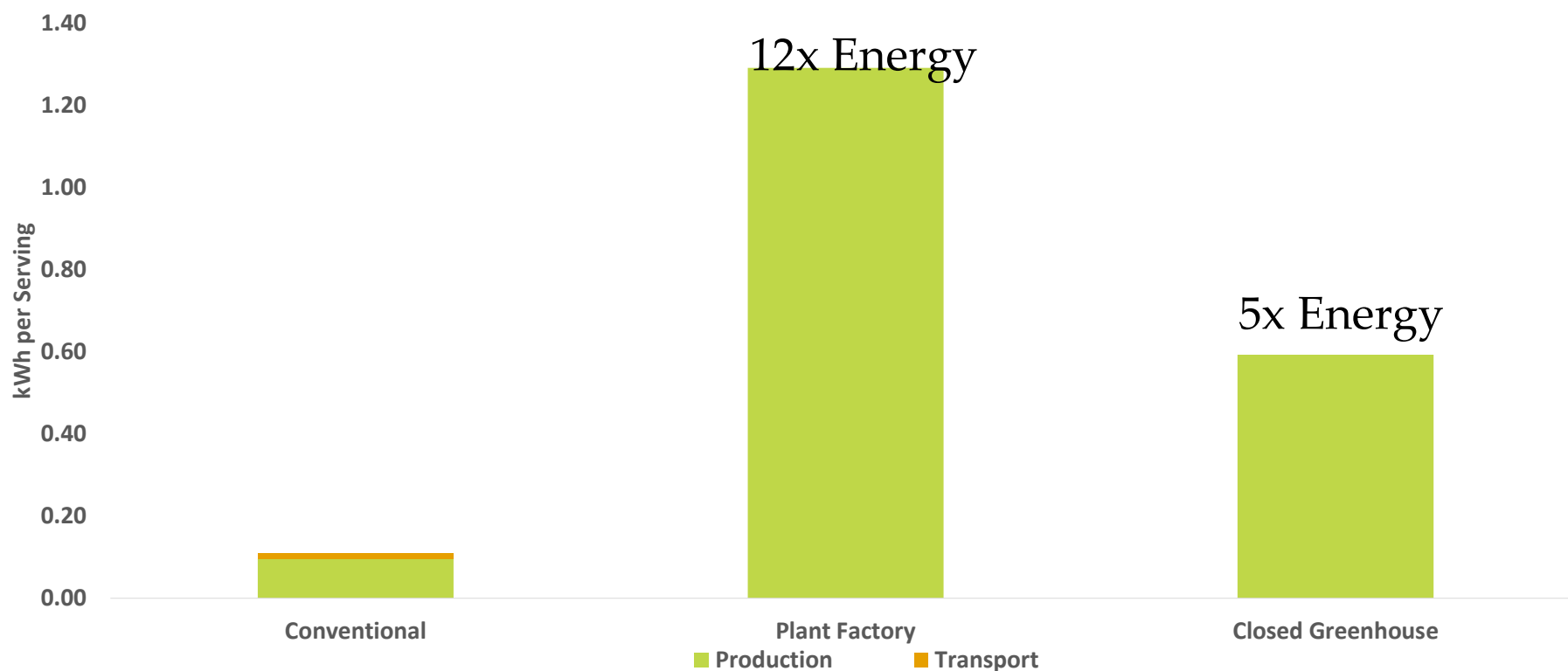
(National Average)



Vertical Farming: Considering Energy and Pollution

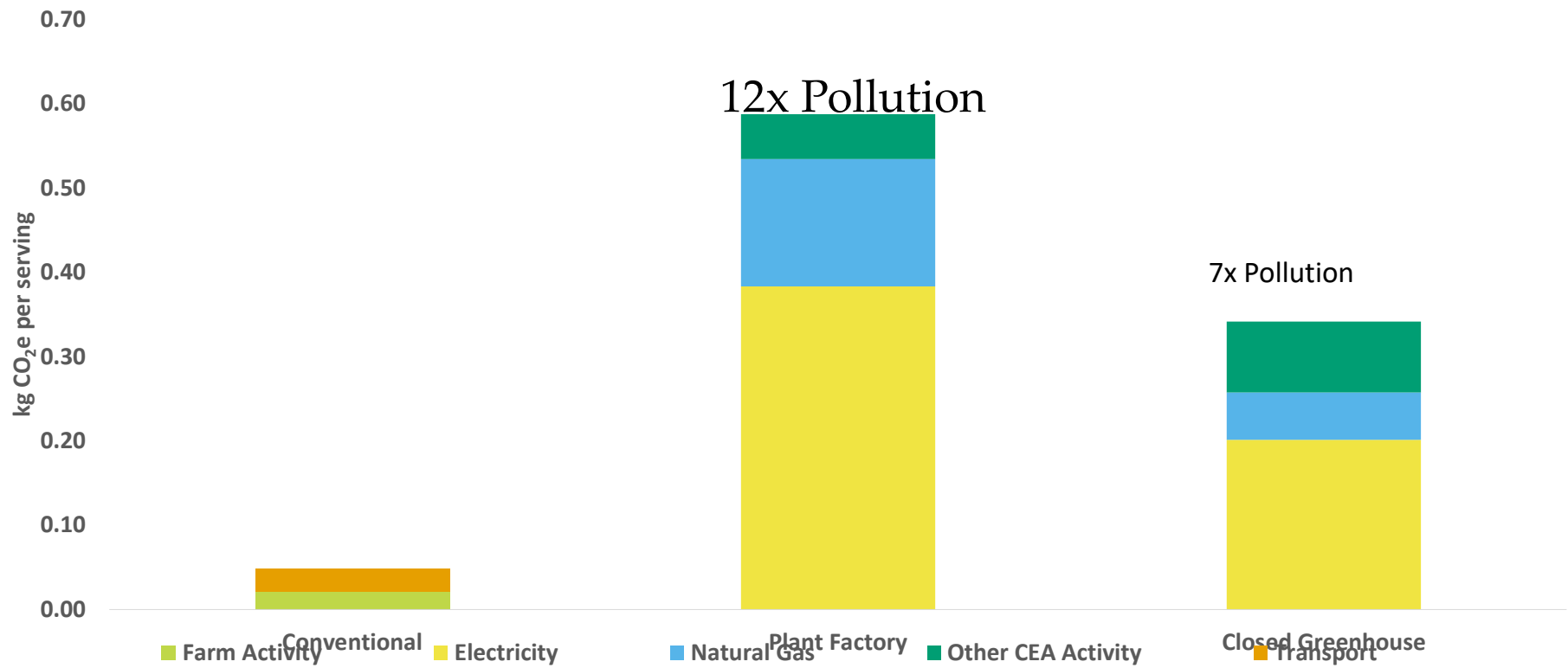
This Photo by Unknown Author is licensed under CC BY-ND

Vertical Farms Use Much More Energy



(Greeley Example for Transport and Energy Models)

Vertical Farms Have Greater Climate Impact



(Greeley Example for Transport and Energy Models)

Decisions in the Future of Vertical Farming

Water Use Efficiency

Local Production



Energy Intensity

Upstream
Pollution Impacts

Resources/Further Reading

- Kosai, T., Neu, G., & Takasaki, M. (Eds.). (2020). *Plant Factory An Indoor Vertical Farming System for Efficient Quality Food Production* (2nd ed.). Elsevier. <https://doi.org/10.1016/C2018-0-00969-X>
- Liebman-Pelages, M., Congolese, J., Morford, L. K., & Reinhart, C. (2021). Validation of a building energy model of a hydroponic container farm and its application in urban design. *Energy and Buildings*, 250, 111192. <https://doi.org/10.1016/j.enbuild.2021.111192>
- Neu, G., & Masani, J. (2022). Hydroponics. In *Plant Factory Basics, Applications and Advances* (pp. 153–166). Elsevier. <https://doi.org/10.1016/B978-0-323-85152-7.00023-9>
- Stossel, F., Jurak, R., Pfister, S., & Hellweg, S. (2012). Life Cycle Inventory and Carbon and Water Food Print of Fruits and Vegetables: Application to a Swiss Retailer. *Environmental Science & Technology*, 46(6), Article 6. <https://doi.org/10.1021/es2030577>
- van So, E. A., Girling, Th. H., & Lieth, J. H. (2019). Technical Equipment in Soilless Production Systems. In *Soilless Culture* (pp. 587–635). Elsevier. <https://doi.org/10.1016/B978-0-444-63696-6.00013-X>

Watershed & River Recovery Update

2023 Poudre River Forum
March 3, 2023



Cameron Peak Fire

Sarah Beck

Arapaho and Roosevelt National Forests and
Pawnee National Grassland



August September October November December



Aug 13

Arapaho & Roosevelt
National Forests



Aug 15

Rocky Mountain
Blue Team

21,017 Acres



Aug 26 - Sep 11

Rocky Mountain
Black Team

Portland NIMO Team



102,596 Acres
(81,579 growth)



9/5
40+ mph Gust
SNOW 9/8
8-14 inches



Sep 8

Southwest Team

125,006 Acres
(22,410 growth)



Sep 29

Pacific Northwest
Team 6

135,556 Acres
(10,550 growth)



Oct 14

Rocky Mountain
Team Dallas

208,663 Acres
(73,107 growth)



10/14
70+ mph Gust
SNOW 10/24
1-2 Feet



Oct 27

Pacific Northwest
Team 2

208,913 Acres
(250 growth)



Nov 9

Pacific Northwest
Team 10



Nov 22

Southern Area
Gold Team

208,913 Acres
(no growth)



Dec 5

Type 3 Team



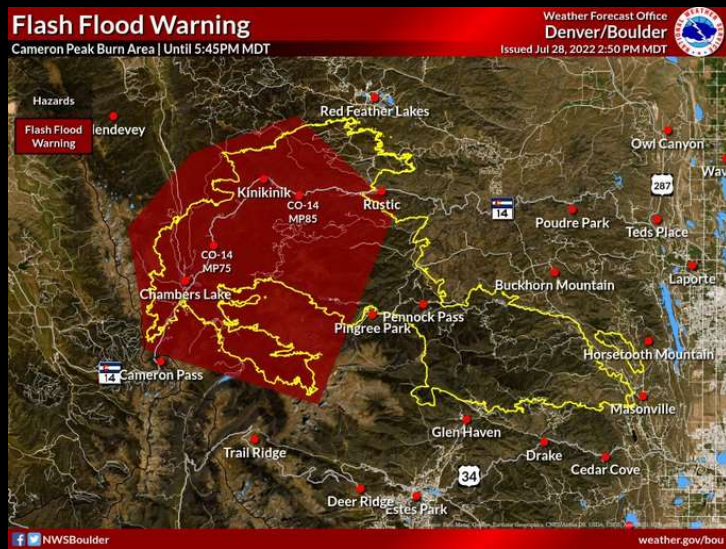
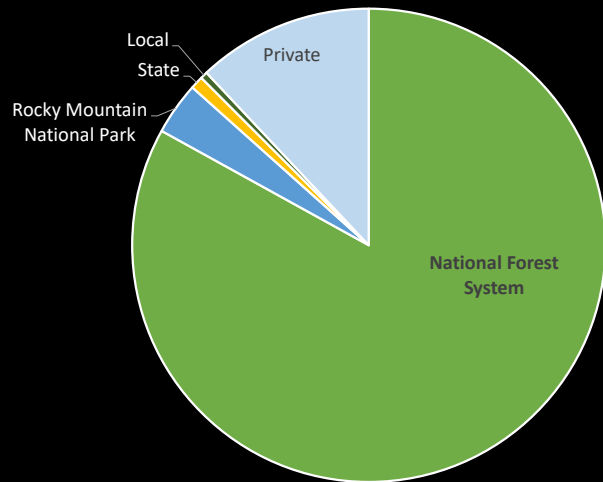
Dec 13

Arapaho & Roosevelt
National Forests

Cameron Peak Fire

August 13 - December 13, 2020

Land Ownership

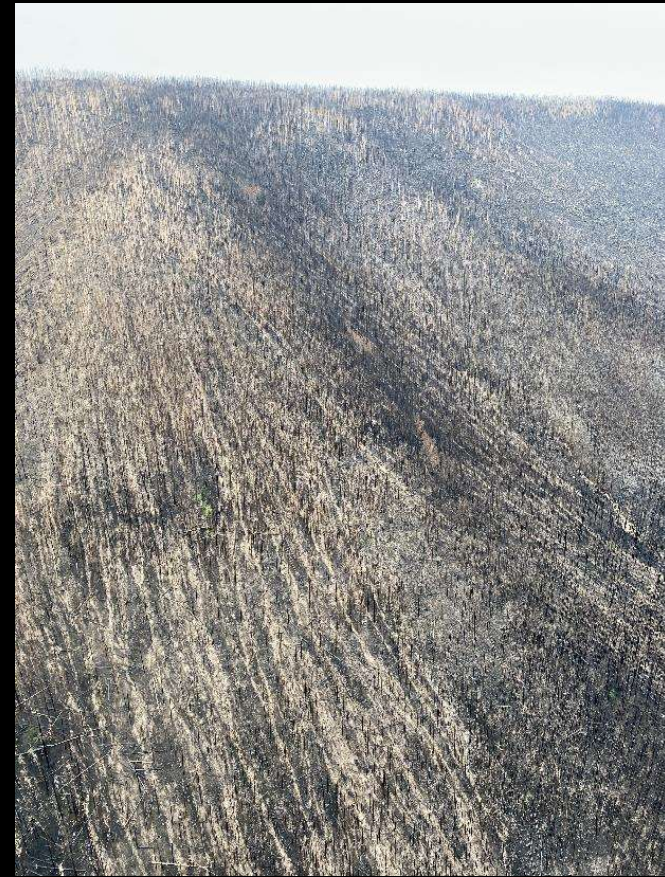




Immediate Recovery Actions



Mid to Long Term Recovery Actions



Other Actions

- Revegetation and reforestation
- Replacing and improving burned recreation infrastructure
- Assessment of trails use in and outside of burn scars
- Replacing burned range allotment fences
- Fixing damaged roads, bridges, and culverts
- Improving wildlife habitat
- Providing for aquatic organism passage at failing stream crossings
- Learning what recovery actions are working and which could be improved



Sarah Beck
Post-fire Recovery Coordinator
Arapaho and Roosevelt National Forests
sarah.beck@usda.gov



Cameron Peak Fire Watershed Post-Fire Mitigation & Restoration Updates

Hally Strevey, Executive Director
Coalition for the Poudre River Watershed



Wildfire Response Phases & Stakeholders Involved



Source: United Way of Larimer County

CPF RESTORATION PROGRAM



Aerial Mulching

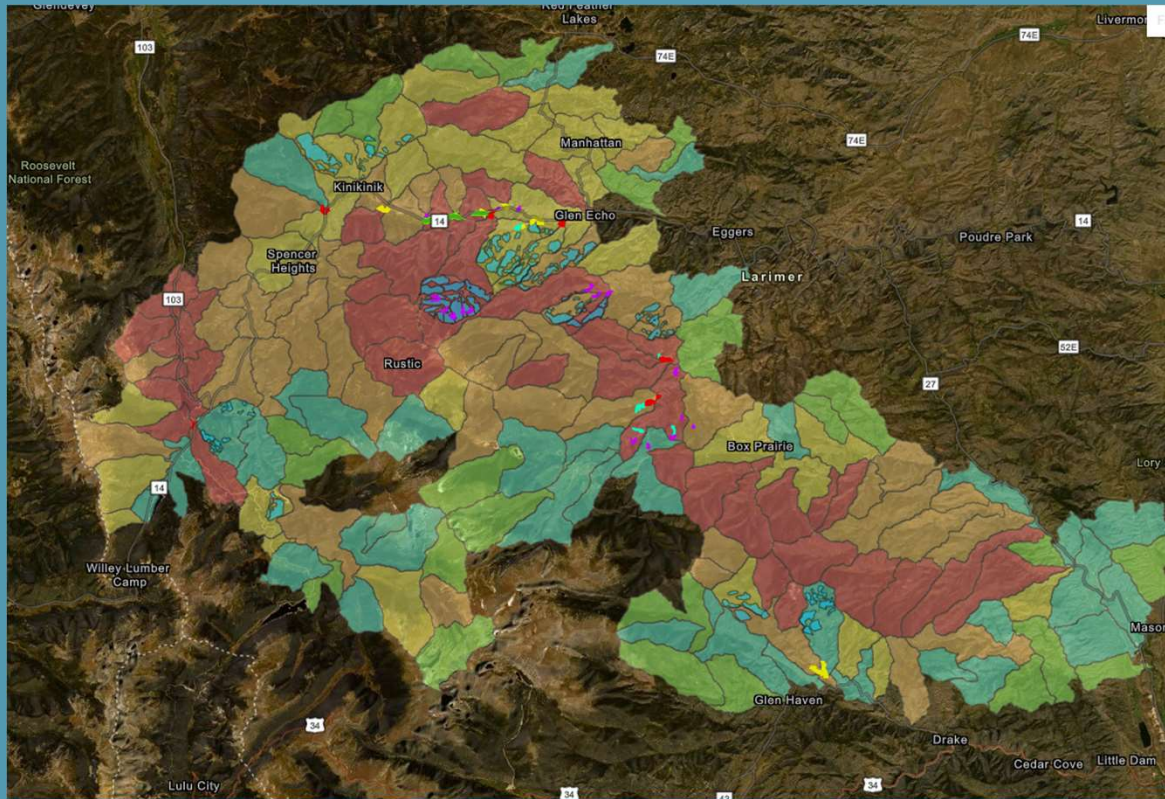


Point Mitigation



Reforestation

CPF POST-FIRE PROJECTS



[Online interactive project map](#)

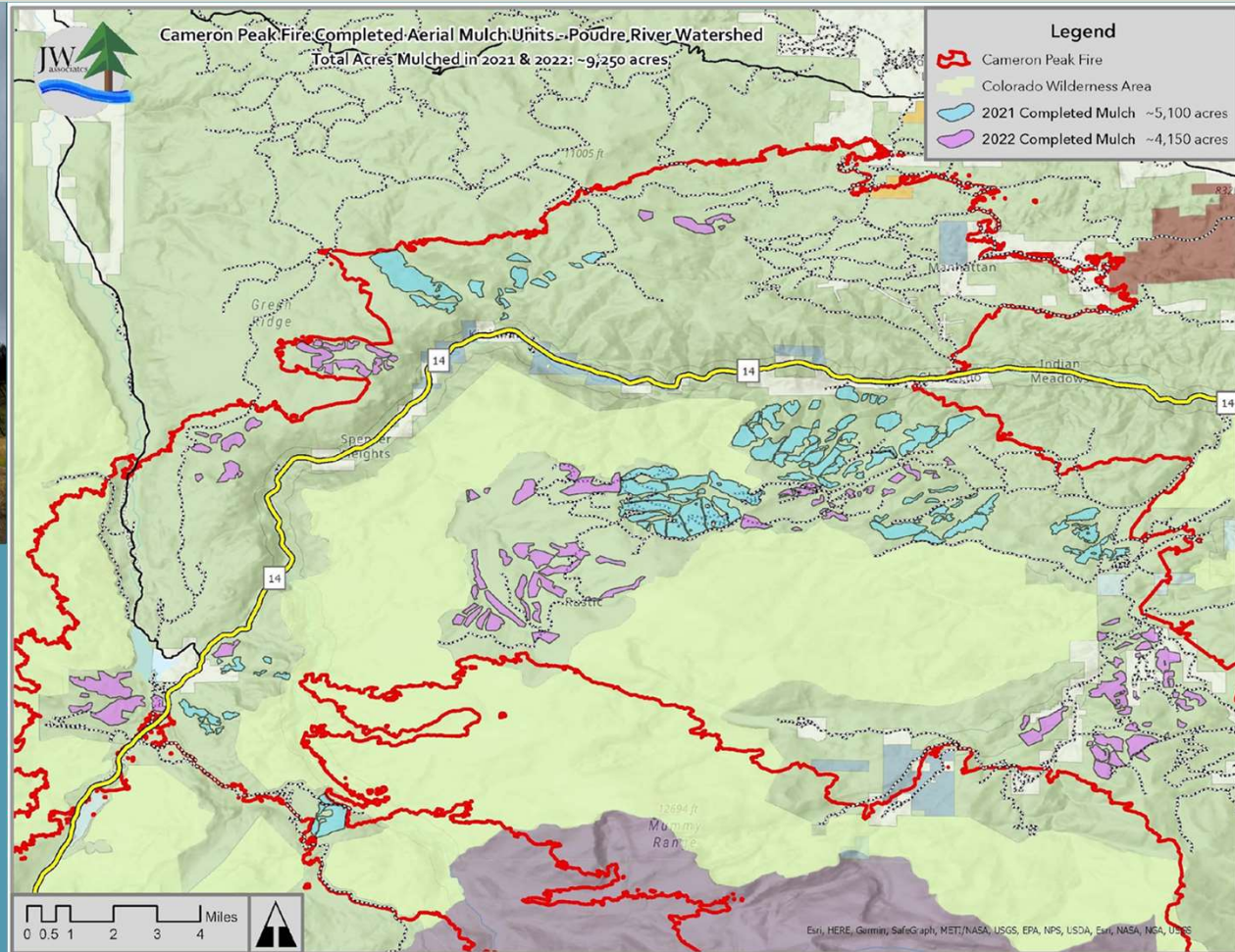


AERIAL MULCH OVERVIEW

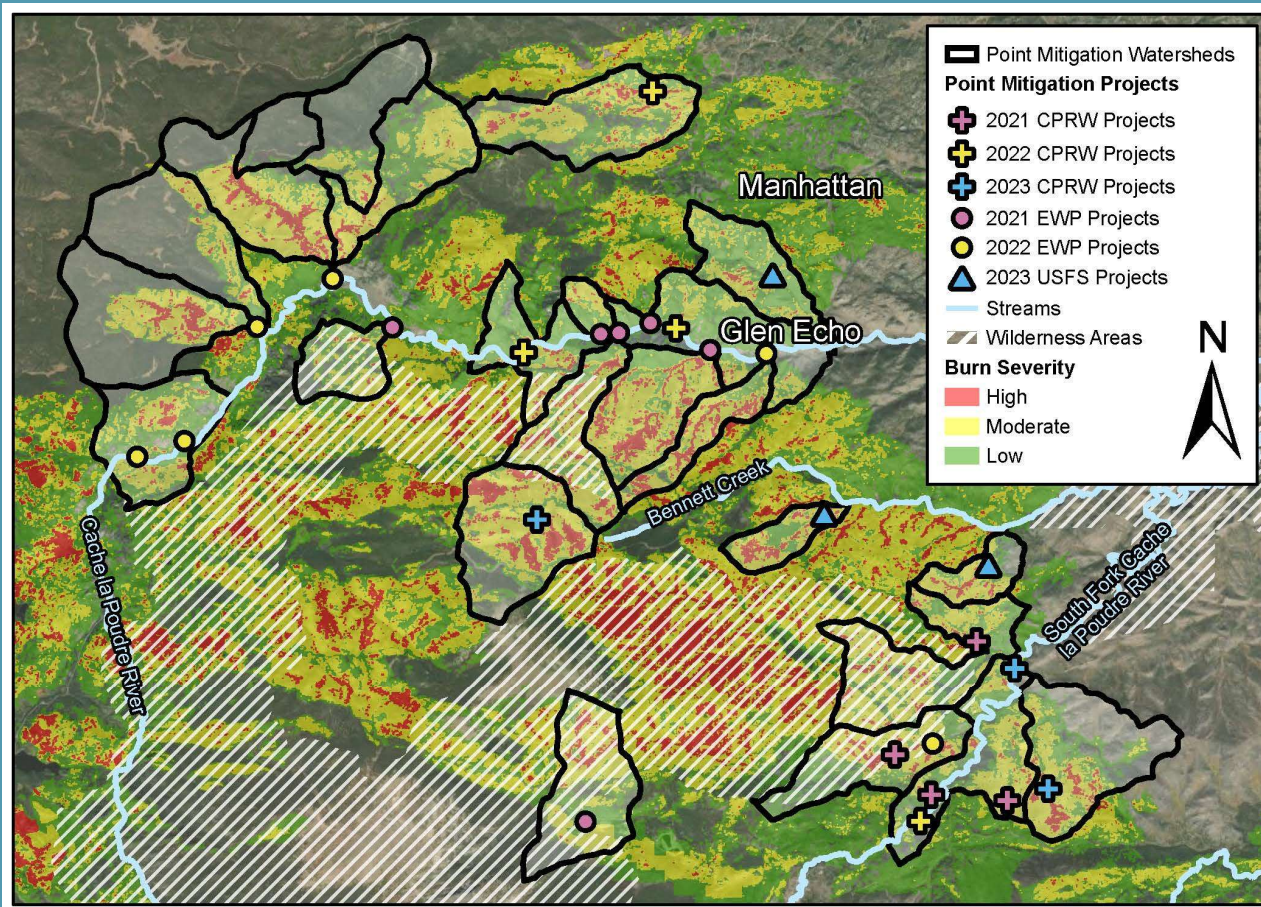


2021-2022 Overview

- 2021 – 5,000+ acres mulched
- 2022 – 4,100+ acres mulched
- Predominantly on USFS lands, with some state and private



POINT MITIGATION



2022-2022 Overview

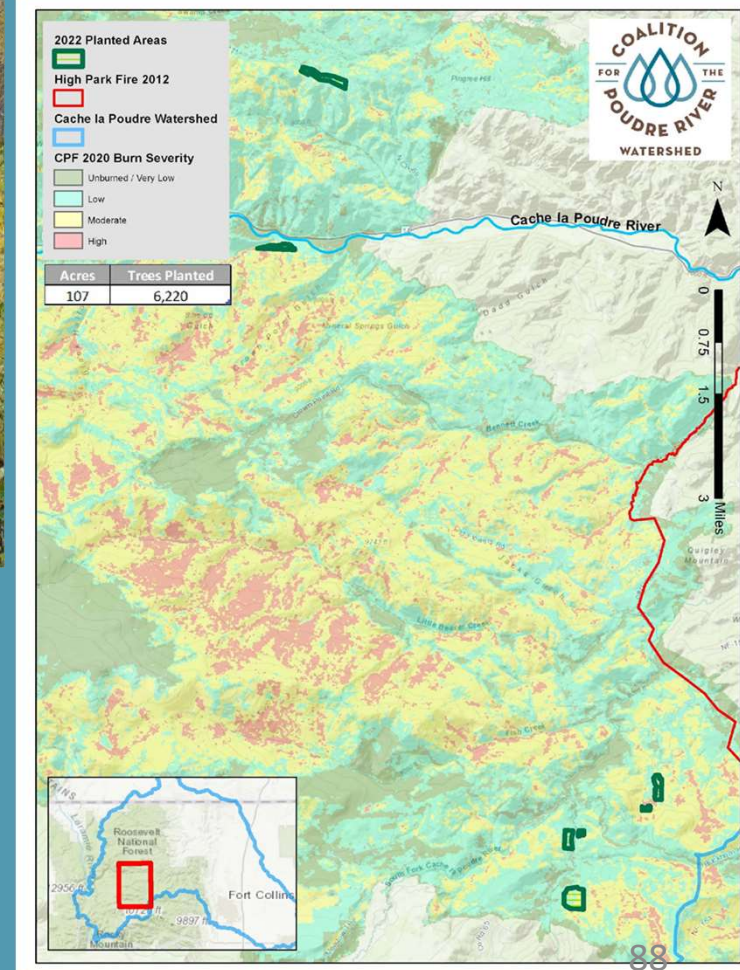
- Over 300 features installed in 17 priority watersheds
- 67 structures protected
- 30,000 upstream acres benefitted

REFORESTATION



2022 Season Overview

- 6200+ ponderosa pines planted
- 650+ volunteer hours
- 100+ acres



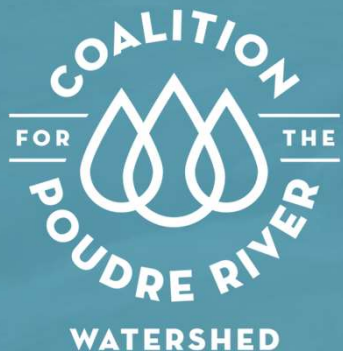
NEXT STEPS

- Planning efforts underway for additional point mitigation projects to be constructed in 2023
- Continued collaborative reforestation efforts
- Updates planned to Upper Poudre Resiliency Watershed Plan
- Continued focus on pre-fire mitigation for watershed areas not burned



QUESTIONS?

Learn more at
www.poudrewatershed.org



@poudrewatershed

POUDRE RIVER FISHERY UPDATE



Kyle Battige; CPW Aquatic Biologist – Fort Collins
Poudre River Forum – March 3rd, 2023

LIVE LIFE
OUTSIDE

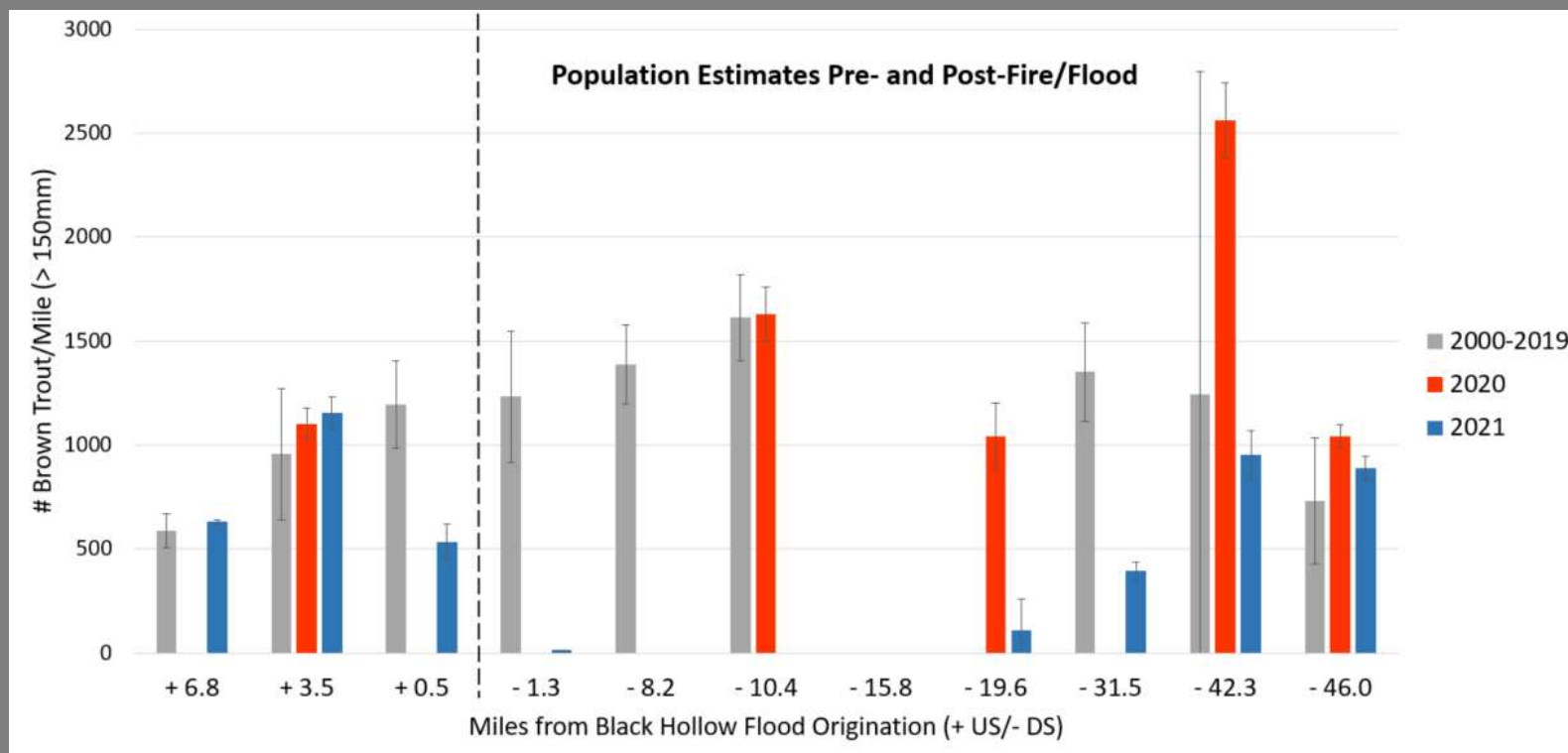
POUDRE RIVER FALL SAMPLING



LIVE LIFE
OUTSIDE

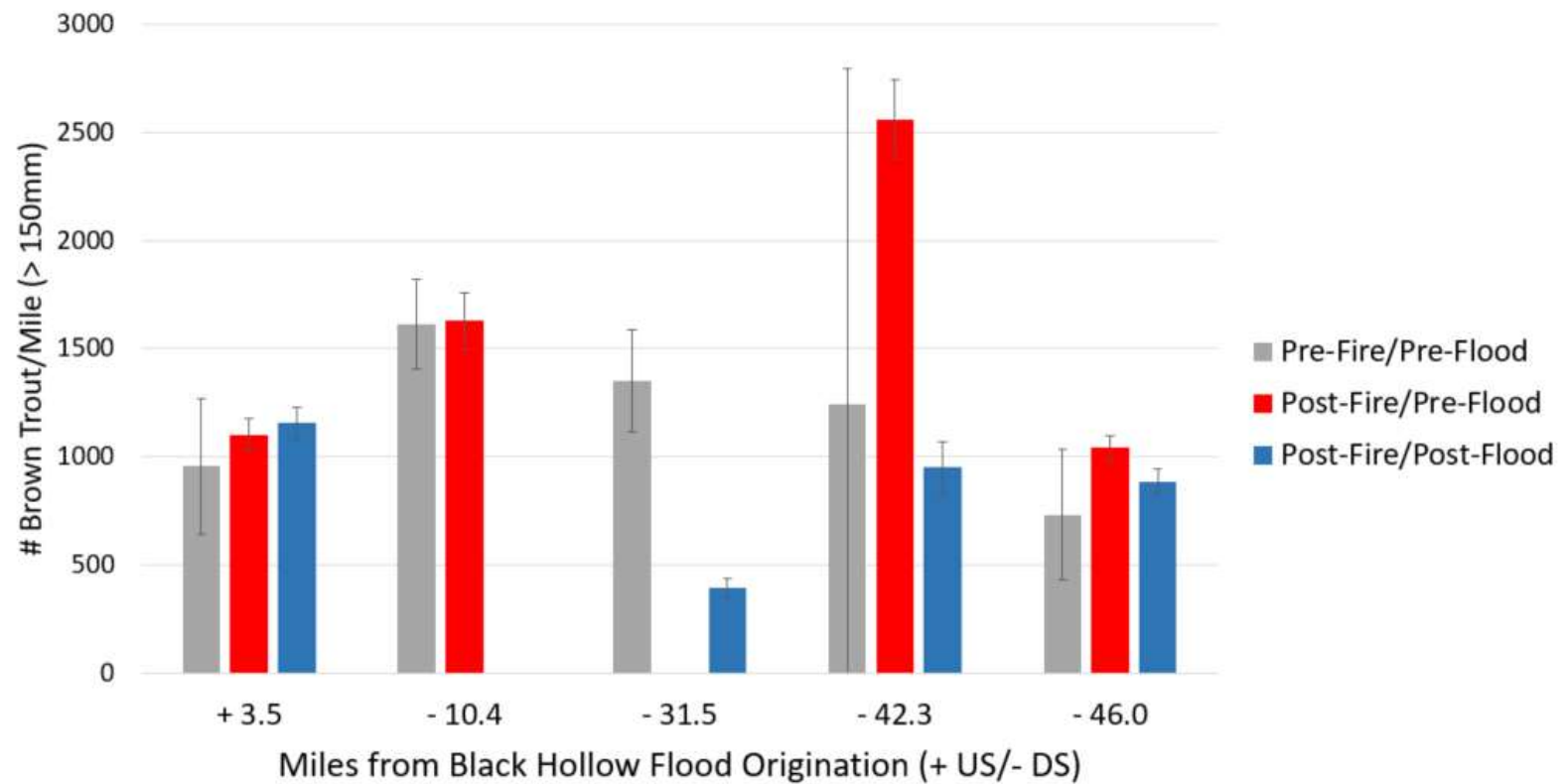


LIVE LIFE
OUTSIDE



LIVE LIFE
OUTSIDE

Between Site Comparisons Pre/Post Fire/Flood



LIVE LIFE
OUTSIDE



LIVE LIFE
OUTSIDE

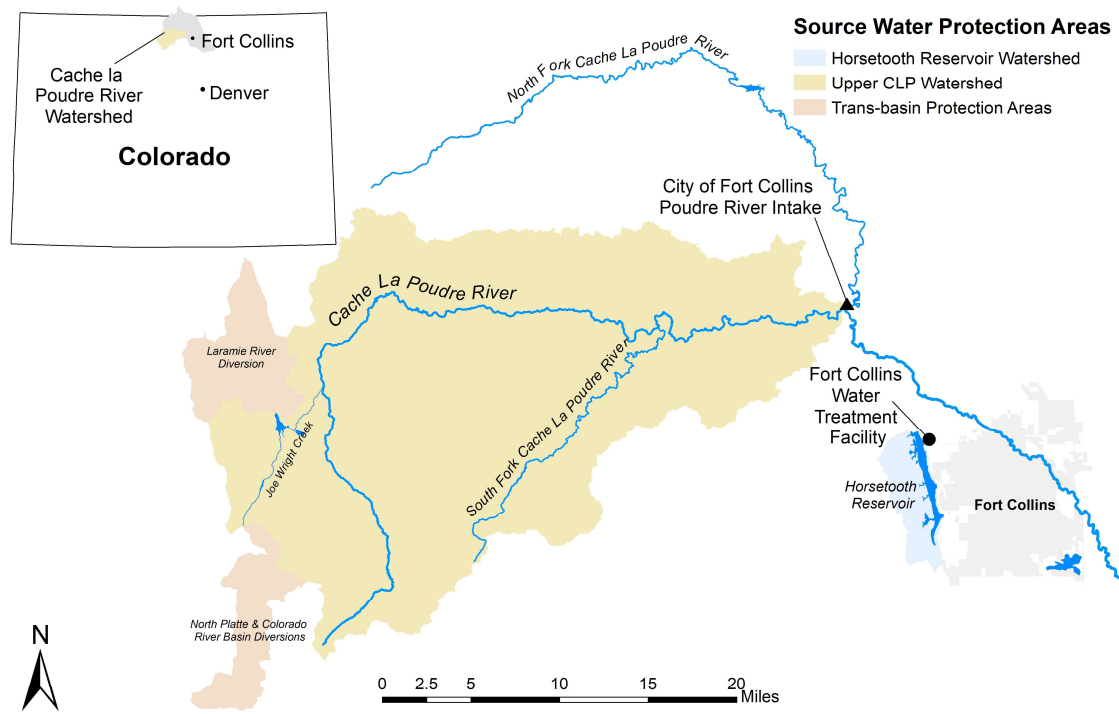
Kyle Battige - Aquatic Biologist – kyle.battige@state.co.us - 970-217-9513



Post-Wildfire Impacts On Cache la Poudre River Water Quality

Jared Heath, Sr. Watershed Specialist
City of Fort Collins Utilities
Water Quality Services Division

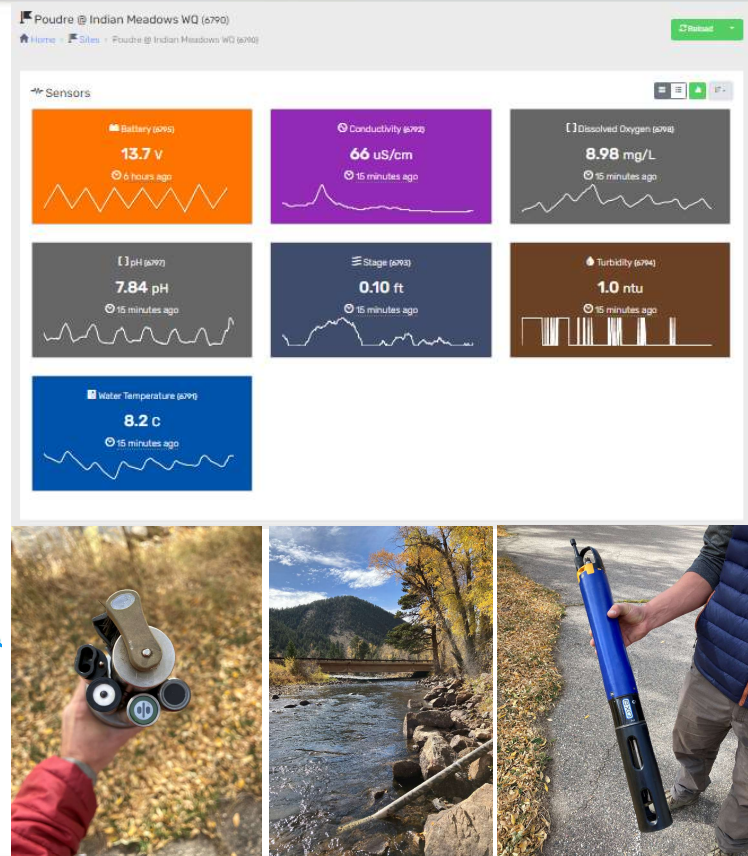
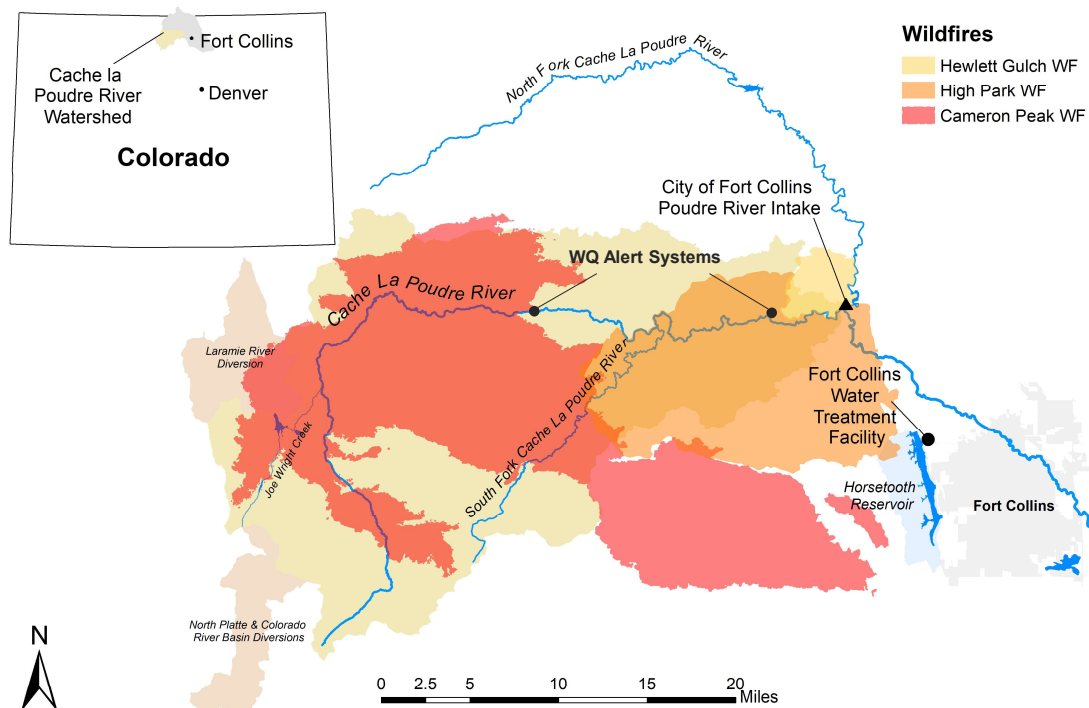
March 3, 2023
Poudre River Forum

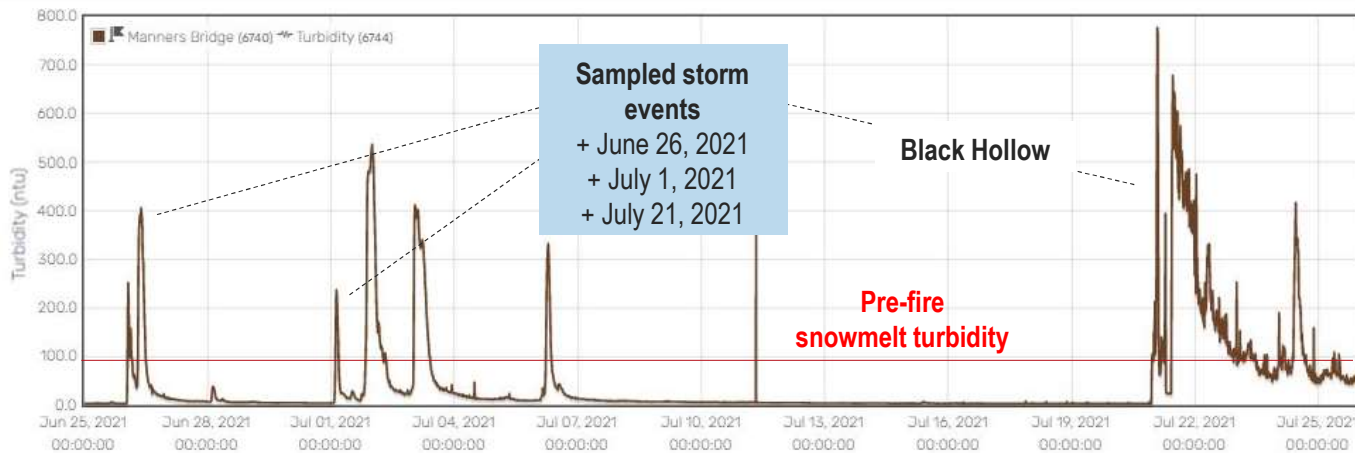


Cache la Poudre River Horsetooth Reservoir

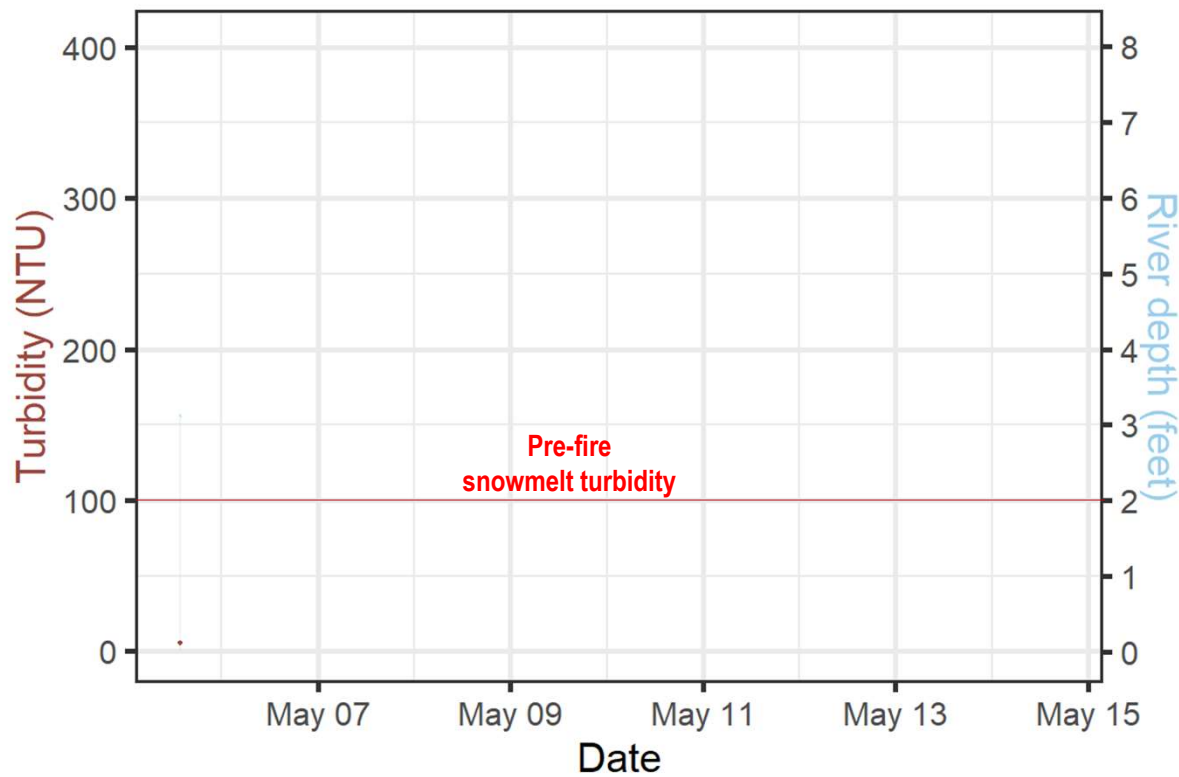
City of Fort Collins

Water Quality Alert System





Elevated and abrupt changes in turbidity, suspended sediment, alkalinity, total organic carbon, nutrients, and metals during storm events.

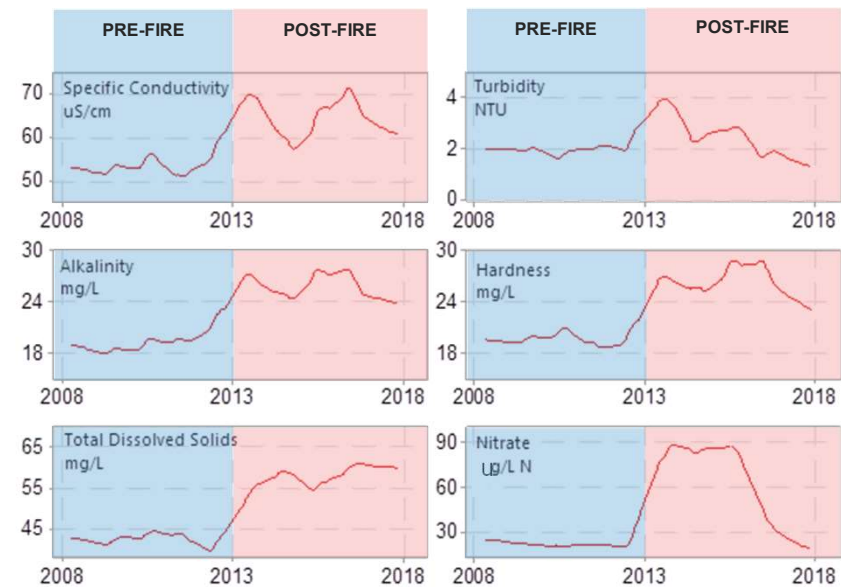
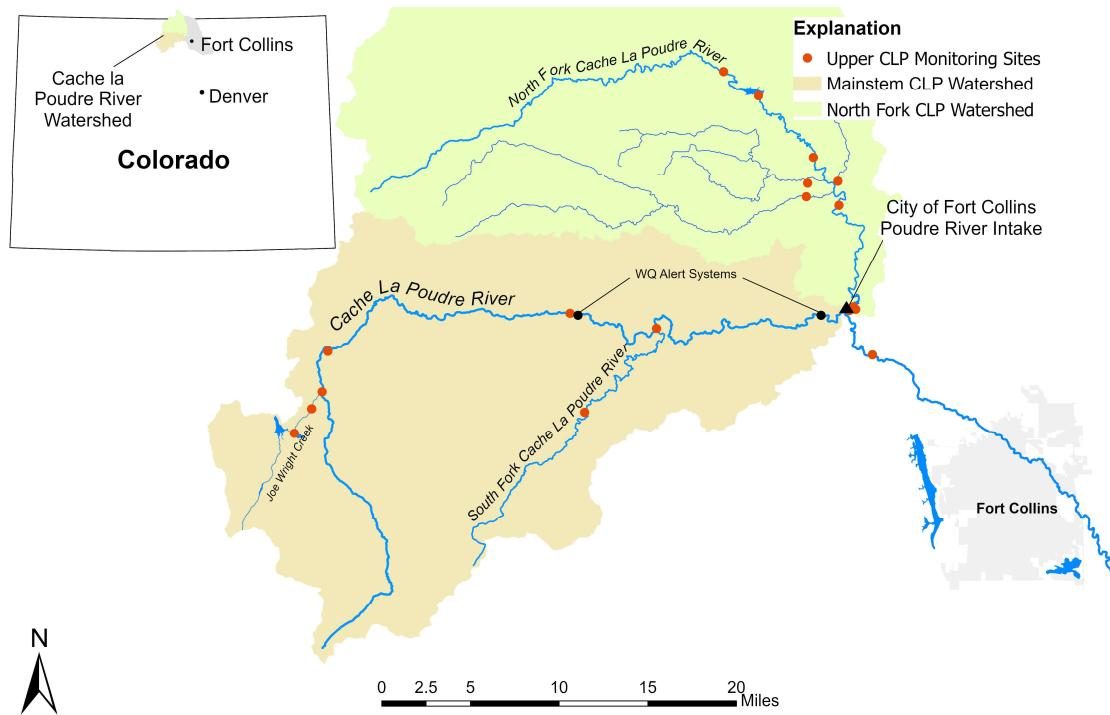


Spring snowmelt runoff in 2022 posed additional water quality impacts to the Cache la Poudre River

Animation by Katie Willie/Open Eco Data Lab at Colorado State University

City of Fort Collins

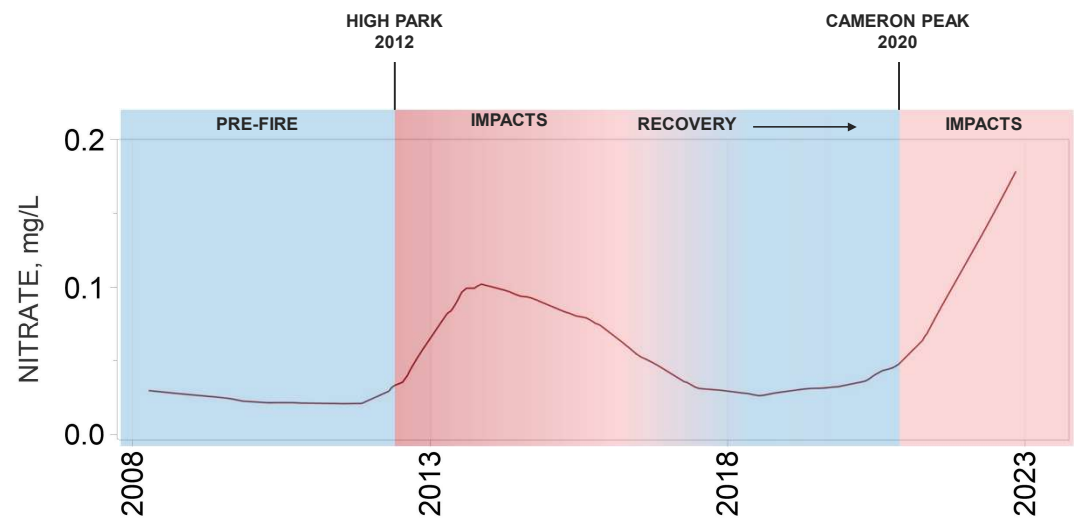
Long-term Water Quality Impacts



August 1, 2022



Photos by Evan Barrientos/FireForest
www.fireforestphoto.com





Redundancy in water supply

Mitigation, restoration & protection

Infrastructure & Ops. improvements

Water quality studies & research



Thank you

Jared Heath
Sr. Watershed Specialist
970-416-2287
jheath@fcgov.com

fcgov.com/source-water-monitoring



Thank you for Attending!

SEE YOU NEXT YEAR

March 1st, 2024





Until 4:30pm

CLOSING RECEPTION

Beer and wine provided by Odell Brewing

Live bluegrass trio, Ansel and the Brain Tattoos

